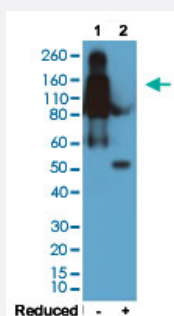


RecomAb™

Mouse IgG2b monoclonal antibody, clone RM108

Catalog # MAB12769 Size 100 ug

Applications



Western Blot

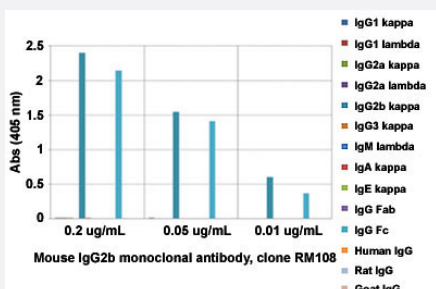
Western blot analysis of Lane 1: nonreduced (-) and Lane 2: reduced (+) mouse IgG2b (20 ng/lane) with Mouse IgG2b monoclonal antibody, clone RM108 (Cat # MAB12769) under 0.2 ug/mL working concentration. This antibody reacts to nonreduced IgG2b (~150 kDa) much stronger than the reduced gamma 2b form (~50 kDa).

Enzyme-linked Immunoabsorbent Assay

ELISA analysis of Mouse IgG2b monoclonal antibody, clone RM108 (Cat # MAB12769) at the following concentrations: 0.2 ug/mL, 0.05 ug/mL, and 0.01 ug/mL. The plate was coated with 50 ng/well of different immunoglobulins and the result shows this antibody reacts to the Fc region of mouse IgG2b; no cross reactivity with IgG1, IgG2a, IgG3, IgM, IgA, IgE, human IgG, rat IgG, or goat IgG. An alkaline phosphatase conjugated anti-rabbit IgG as the secondary antibody.

Enzyme-linked Immunoabsorbent Assay

A titer ELISA of mouse IgG2a. The plate was coated with different amounts of mouse IgG2a. A serial dilution of Mouse IgG2b monoclonal antibody, clone RM108 (Cat# MAB12769) was used as the primary antibody. An alkaline phosphatase conjugated anti-rabbit IgG as the secondary antibody.



Specification

Product Description

Rabbit recombinant monoclonal antibody raised against mouse IgG2b.

Antibody Species	Rabbit
Immunogen	Original antibody is raised against mouse IgG2b.
Sequence	N/A
Reactivity	Mouse
Specificity	This antibody reacts to the Fc region of mouse IgG2b. No cross reactivity with mouse IgG1, IgG2a, IgG3, IgM, IgA, IgE, human IgG, rat IgG, or goat IgG.
Form	Liquid
Purification	Protein A affinity purification
Isotype	IgG
Recommend Usage	ELISA (0.005 - 0.2 ug/mL) Flow Cytometry Immunocytochemistry (0.5 - 2 ug/mL) Immunohistochemistry (0.5 - 2 ug/mL) Immunoprecipitation Western Blot (0.1 - 0.5 ug/mL) The optimal working dilution should be determined by the end user.
Storage Buffer	In PBS (50% glycerol, 1% BSA, 0.09% sodium azide)
Storage Instruction	Store at -20°C. Aliquot to avoid repeated freezing and thawing.
Note	This product contains sodium azide: a POISONOUS AND HAZARDOUS SUBSTANCE which should be handled by trained staff only.

Applications

- Western Blot

Western blot analysis of Lane 1: nonreduced (-) and Lane 2: reduced (+) mouse IgG2b (20 ng/lane) with Mouse IgG2b monoclonal antibody, clone RM108 (Cat # MAB12769) under 0.2 ug/mL working concentration. This antibody reacts to nonreduced IgG2b (~150 kDa) much stronger than the reduced gamma 2b form (~50 kDa).

- Immunohistochemistry

- Immunocytochemistry

- Immunoprecipitation

- Enzyme-linked Immunoabsorbent Assay

ELISA analysis of Mouse IgG2b monoclonal antibody, clone RM108 (Cat # MAB12769) at the following concentrations: 0.2 ug/mL, 0.05 ug/mL, and 0.01 ug/mL. The plate was coated with 50 ng/well of different immunoglobulins and the result shows this antibody reacts to the Fc region of mouse IgG2b; no cross reactivity with IgG1, IgG2a, IgG3, IgM, IgA, IgE, human IgG, rat IgG, or goat IgG. An alkaline phosphatase conjugated anti-rabbit IgG as the secondary antibody.

- Enzyme-linked Immunoabsorbent Assay

A titer ELISA of mouse IgG2a. The plate was coated with different amounts of mouse IgG2a. A serial dilution of Mouse IgG2b monoclonal antibody, clone RM108 (Cat# MAB12769) was used as the primary antibody. An alkaline phosphatase conjugated anti-rabbit IgG as the secondary antibody.

- Flow Cytometry

Gene Info — Igh-3

Entrez GeneID	16016
---------------	-----------------------

Protein Accession#	P01867
--------------------	------------------------

Gene Name	Igh-3
-----------	-------

Gene Alias	IGHG2B, IgG2b, gamma2b
------------	------------------------

Gene Description	immunoglobulin heavy chain 3 (serum IgG2b)
------------------	--

Gene Ontology	Hyperlink
---------------	---------------------------

Other Designations	-
--------------------	---