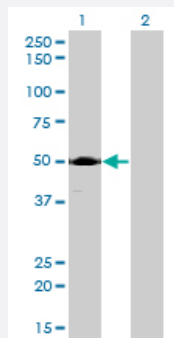


# ACP2 monoclonal antibody (M01), clone M1-4A12

Catalog # H00000053-M01

Size 100 ug

## Applications

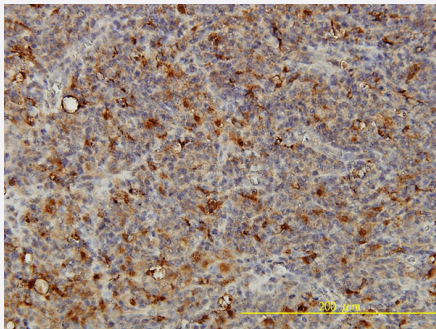


### Western Blot (Transfected lysate)

Western Blot analysis of ACP2 expression in transfected 293T cell line by ACP2 monoclonal antibody (M01), clone M1-4A12.

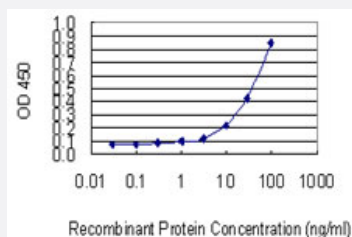
Lane 1: ACP2 transfected lysate (48.3 kDa).

Lane 2: Non-transfected lysate.



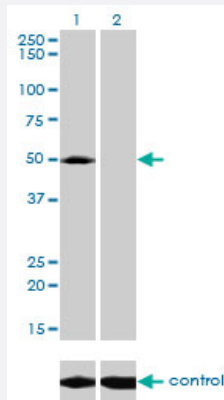
### Immunohistochemistry (Formalin/PFA-fixed paraffin-embedded sections)

Immunoperoxidase of monoclonal antibody to ACP2 on formalin-fixed paraffin-embedded human lymphoma tissue. [antibody concentration 5 ug/ml]



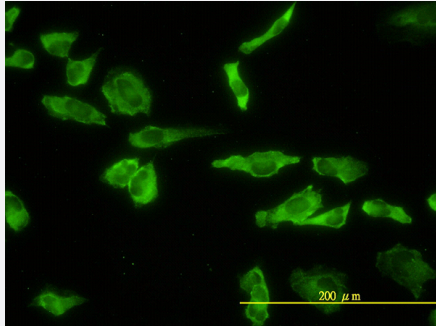
### Sandwich ELISA (Recombinant protein)

Detection limit for recombinant GST tagged ACP2 is 1 ng/ml as a capture antibody.



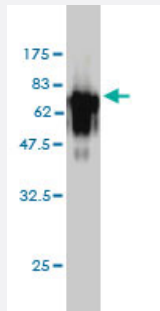
## RNAi Knockdown (Antibody validated)

Western blot analysis of ACP2 over-expressed 293 cell line, cotransfected with ACP2 Validated Chimera RNAi ( Cat # H00000053-R01V ) (Lane 2) or non-transfected control (Lane 1). Blot probed with ACP2 monoclonal antibody (M01), clone M1-4A12 (Cat # H00000053-M01 ). GAPDH ( 36.1 kDa ) used as specificity and loading control.



## Immunofluorescence

Immunofluorescence of monoclonal antibody to ACP2 on HeLa cell. [antibody concentration 10 ug/ml]



Western Blot detection against Immunogen (72.27 KDa) .

## Specification

<b>Product Description</b>	Mouse monoclonal antibody raised against a full length recombinant ACP2.
<b>Immunogen</b>	ACP2 (AAH03160, 1 a.a. ~ 423 a.a) full-length recombinant protein with GST tag. MW of the GST tag alone is 26 KDa.
<b>Sequence</b>	MAGKRSGWSRAALLQLLGVNLVMPPTQARSLRFVTLTYRHGDRSPVKTYPKDPYQEEWEPQ GFGQLTKEGMLQHWELGQALRQRYHGFLNTSYHRQEVYVRSTDFDRTLMSAEANLAGLFPPNG MQRFNPNISWQPIPVHTVPITEDRLLKFPLGPCPRYEQQLQNETRQTPEYQNESSRNAQFLDMVAN ETGLDLTLETWNVYDTLFCQTHGLRLPPWASPQTMQRLSRLKDFSFRFLFGIYQQAQEKARLQ GGVLLAQIRKNLTLMATTSQLPKLLVYSAHDTTLVALQMALDVNGEQAPYASCHIFELYQEDSGN FSVEMYFRNESDKAPWPLSLPGCPHRCPLQDFLRLTEPVVPKDWQQECQLASGPADTEVVAL AVCGSILFLLMLLLTVLFRMQAQPYPGRHVADGEDHA
<b>Host</b>	Mouse

Reactivity	Human
Interspecies Antigen Sequence	Mouse (90); Rat (90)
Isotype	IgG2b lambda
Quality Control Testing	Antibody Reactive Against Recombinant Protein. Western Blot detection against Immunogen (72.27 KDa) .
Storage Buffer	In 1x PBS, pH 7.4
Storage Instruction	Store at -20°C or lower. Aliquot to avoid repeated freezing and thawing.

## Applications

- Western Blot (Transfected lysate)

Western Blot analysis of ACP2 expression in transfected 293T cell line by ACP2 monoclonal antibody (M01), clone M1-4A12.

Lane 1: ACP2 transfected lysate(48.3 KDa).

Lane 2: Non-transfected lysate.

[Protocol Download](#)

- Western Blot (Recombinant protein)

[Protocol Download](#)

- Immunohistochemistry (Formalin/PFA-fixed paraffin-embedded sections)

Immunoperoxidase of monoclonal antibody to ACP2 on formalin-fixed paraffin-embedded human lymphoma tissue. [antibody concentration 5 ug/ml]

[Protocol Download](#)

- Sandwich ELISA (Recombinant protein)

Detection limit for recombinant GST tagged ACP2 is 1 ng/ml as a capture antibody.

[Protocol Download](#)

- ELISA

- RNAi Knockdown (Antibody validated)

Western blot analysis of ACP2 over-expressed 293 cell line, cotransfected with ACP2 Validated Chimera RNAi ( Cat # H00000053-R01V ) (Lane 2) or non-transfected control (Lane 1). Blot probed with ACP2 monoclonal antibody (M01), clone M1-4A12 (Cat # H00000053-M01 ). GAPDH ( 36.1 kDa ) used as specificity and loading control.

[Protocol Download](#)

- Immunofluorescence

Immunofluorescence of monoclonal antibody to ACP2 on HeLa cell. [antibody concentration 10 ug/ml]

## Gene Info — ACP2

Entrez GeneID [53](#)

GeneBank Accession# [BC003160](#)

Protein Accession# [AAH03160](#)

Gene Name ACP2

Gene Alias -

Gene Description acid phosphatase 2, lysosomal

Omim ID [171650](#)

Gene Ontology [Hyperlink](#)

**Gene Summary** This gene encodes the beta subunit of lysosomal acid phosphatase (LAP). LAP is chemically and genetically distinct from red cell acid phosphatase. The encoded protein belongs to a family of distinct isoenzymes which hydrolyze orthophosphoric monoesters to alcohol and phosphate. Mutations in this gene or in the related alpha subunit gene cause acid phosphatase deficiency. Multiple alternatively spliced transcript variants encoding different isoforms have been identified for this gene. [provided by RefSeq]

Other Designations -

## Pathway

- [gamma-Hexachlorocyclohexane degradation](#)
- [Lysosome](#)
- [Riboflavin metabolism](#)

## Disease

- [Genetic Predisposition to Disease](#)
- [Prostatic Neoplasms](#)
- [Supranuclear Palsy](#)