

NanoAb™

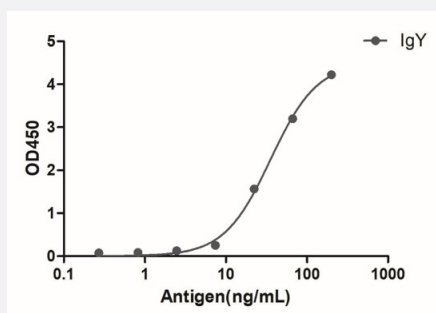
RecomAb™

Chicken IgY VHH recombinant monoclonal antibody (Biotin)

Catalog # RAB07199

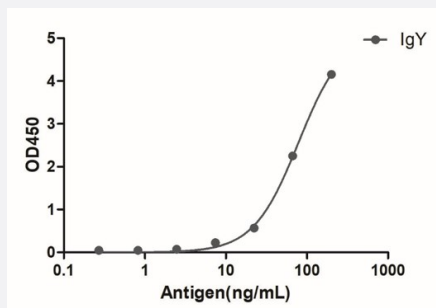
Size 100 ug

Applications



Enzyme-linked Immunoabsorbent Assay

A titer ELISA of chicken IgY. The plate was coated with different amounts of chicken IgY. Chicken VHH IgY recombinant monoclonal antibody (Biotin) (Cat # RAB07199) was used as the primary antibody at 1:10000 and streptavidin (HRP) (Cat # RAB07268) as the secondary antibody.



Enzyme-linked Immunoabsorbent Assay

ELISA of specificity for different species of IgG. The plate was coated with 2ug/ml of different IgG. Chicken VHH IgY recombinant monoclonal antibody (Biotin) (Cat # RAB07199) was used as the primary antibody at 1:1000 and streptavidin (HRP) (Cat # RAB07268) as the secondary antibody.

Specification

Product Description Alpaca VHH recombinant monoclonal antibody raised against chicken IgY. The antibody is conjugated with biotin.

Antibody Species Alpaca

Immunogen Recombinant Fc region of chicken IgY

Reactivity Chicken

Specificity Chicken IgY Fc region

Form Liquid

| | |
|---------------------|---|
| Conjugation | Biotin |
| Purification | Protein A |
| Isotype | Alpaca IgG2b/2c |
| Recommend Usage | ELISA (1:10000-1:50000) Immunoprecipitation (1-2ug) Surface Plasmon Resonance Western Blot (1:10000-1:50000) The optimal working dilution should be determined by the end user. |
| Storage Buffer | In 10 mM PBS, pH 7.5 (0.05% sucrose, 0.1% trehalose, 0.01% proclin 300) |
| Storage Instruction | Store at -20°C. Aliquot to avoid repeated freezing and thawing. |

Applications

- Western Blot

- Immunoprecipitation

- Enzyme-linked Immunoabsorbent Assay

A titer ELISA of chicken IgY. The plate was coated with different amounts of chicken IgY. Chicken VHH IgY recombinant monoclonal antibody (Biotin) (Cat # RAB07199) was used as the primary antibody at 1:10000 and streptavidin (HRP) (Cat # RAB07268) as the secondary antibody.

- Enzyme-linked Immunoabsorbent Assay

ELISA of specificity for different species of IgG. The plate was coated with 2ug/ml of different IgG. Chicken VHH IgY recombinant monoclonal antibody (Biotin) (Cat # RAB07199) was used as the primary antibody at 1:1000 and streptavidin (HRP) (Cat # RAB07268) as the secondary antibody.

- Surface Plasmon Resonance