

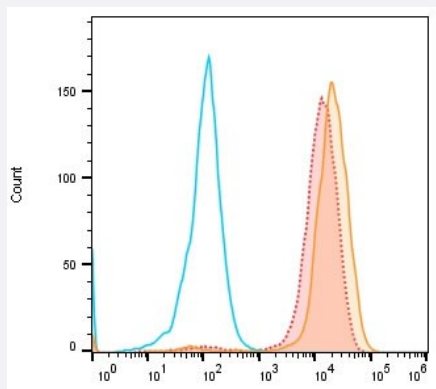
NanoAb™

RecomAb™

# BCMA VHH recombinant monoclonal antibody

Catalog # RAB06799      Size 100 ug

## Applications



### Flow Cytometry

Flow cytometric analysis of BCMA-overexpressed HEK-293T (human epithelial cell line from embryonic kidney transformed with large T antigen) labeling BCMA with BCMA VHH recombinant monoclonal antibody (Cat # RAB06799) at 1:10000 dilution (red)/ 1:1000 (yellow) compared with Human IgG1-Isotype control (green).

## Specification

**Product Description** Alpaca VHH recombinant monoclonal antibody raised against human BCMA.

**Antibody Species** Alpaca

**Immunogen** Human BCMA recombinant protein

**Reactivity** Crab-eating macaque, Human, Alpaca

**Form** Liquid

**Conjugation** Unconjugated

**Purification** Protein A

**Isotype** Human IgG1 Fc (mutation)

**Recommend Usage**  
 ELISA (1:4000-1:10000)  
 Flow Cytometry (1:200-1:1000)  
 The optimal working dilution should be determined by the end user.

<b>Storage Buffer</b>	In 10 mM PBS, pH 7.5 (0.05% sucrose, 0.1% trehalose, 0.01% proclin 300, 50% glycerol)
<b>Storage Instruction</b>	Store at -20°C. Aliquot to avoid repeated freezing and thawing.

## Applications

- Enzyme-linked Immunoabsorbent Assay
- Flow Cytometry

Flow cytometric analysis of BCMA-overexpressed HEK-293T (human epithelial cell line from embryonic kidney transformed with large T antigen) labeling BCMA with BCMA VHH recombinant monoclonal antibody (Cat # RAB06799) at 1:10000 dilution (red)/ 1:1000 (yellow) compared with Human IgG1-Isotype control (green).