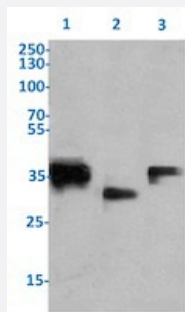


RecomAb™

CD74 recombinant monoclonal antibody, clone LN-2

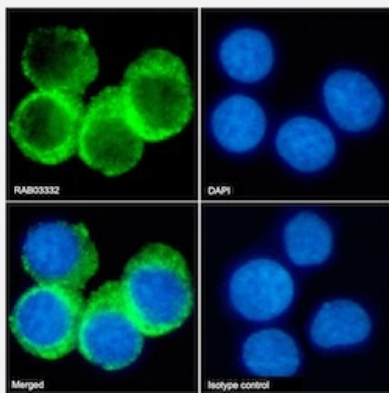
Catalog # RAB03332 Size 200 ug

Applications



Western Blot

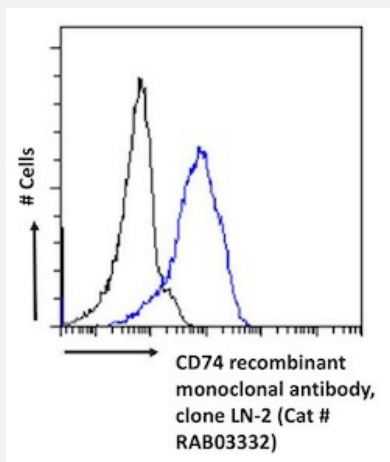
Western blot analysis of Lane 1: Daudi cell lysate, Lane 2: human spleen lysate and Lane 3: human tonsil tissue lysate with CD74 recombinant monoclonal antibody, clone LN-2 (Cat # RAB03332).



Immunohistochemistry (Formalin/PFA-fixed paraffin-embedded sections)

Immunofluorescent staining of Daudi cells with CD74 recombinant monoclonal antibody, clone LN-2 (Cat # RAB03332).

Immunofluorescence analysis of paraformaldehyde fixed Daudi cells on Shi-fix™ coverslips stained with the chimeric r version of RAB03332 at 10 ug/ml for 1h followed by Alexa Fluor® 488 secondary antibody (2 ug/ml)- showing membrane staining. The nuclear stain is DAPI (blue). Panels show from left-right- top-bottom RAB03332- DAPI- merged channels and an isotype control. The isotype control was an unknown specificity antibody (.1) followed by staining with Alexa Fluor® 488 secondary antibody.



Flow Cytometry

Flow cytometric analysis of Daudi cells with CD74 recombinant monoclonal antibody, clone LN-2 (Cat # RAB03332).

Daudi cells were stained with anti-unknown specificity antibody (3.0; isotype control- black line) or the r version of RAB03332 (blue line) at a dilution of 1:100 for 1h at RT. After washing- the bound antibody was detected using a goat anti-r AlexaFluor® 488 antibody at a dilution of 1:1000 and cells analyzed using a FACSCanto flow-cytometer.

Specification

Product Description Rabbit recombinant monoclonal antibody raised against human CD74.

Antibody Species Rabbit

Immunogen Original antibody is raised against SU-DHL-4 lymphoma cells.

Reactivity Human, Mouse, Rat

Form Liquid

Isotype IgG kappa

Recommend Usage

- ELISA
- Flow Cytometry
- Immunofluorescence
- Immunohistochemistry
- Immunoprecipitation
- Western Blot

The optimal working dilution should be determined by the end user.

Storage Buffer In PBS (0.02% Proclin 300)

Storage Instruction Store at 4°C for 3 months. For long term storage store at -20°C. Aliquot to avoid repeated freezing and thawing.

Applications

- Western Blot

Western blot analysis of Lane 1: Daudi cell lysate, Lane 2: human spleen lysate and Lane 3: human tonsil tissue lysate with CD74 recombinant monoclonal antibody, clone LN-2 (Cat # RAB03332).

- Immunohistochemistry (Formalin/PFA-fixed paraffin-embedded sections)

Immunofluorescent staining of Daudi cells with CD74 recombinant monoclonal antibody, clone LN-2 (Cat # RAB03332). Immunofluorescence analysis of paraformaldehyde fixed Daudi cells on Shi-fix™ coverslips stained with the chimeric r version of RAB03332 at 10 ug/ml for 1h followed by Alexa Fluor® 488 secondary antibody (2 ug/ml)- showing membrane staining. The nuclear stain is DAPI (blue). Panels show from left-right- top-bottom RAB03332- DAPI- merged channels and an isotype control. The isotype control was an unknown specificity antibody (.1) followed by staining with Alexa Fluor® 488 secondary antibody.

- Immunohistochemistry

- Immunoprecipitation

- Enzyme-linked Immunoabsorbent Assay

- Flow Cytometry

Flow cytometric analysis of Daudi cells with CD74 recombinant monoclonal antibody, clone LN-2 (Cat # RAB03332). Daudi cells were stained with anti-unknown specificity antibody (3.0; isotype control- black line) or the r version of RAB03332 (blue line) at a dilution of 1:100 for 1h at RT. After washing- the bound antibody was detected using a goat anti-r AlexaFluor® 488 antibody at a dilution of 1:1000 and cells analyzed using a FACSCanto flow-cytometer.

Gene Info — CD74

Entrez GeneID	972
Gene Name	CD74
Gene Alias	DHLA, HLADG, Ia-GAMMA
Gene Description	CD74 molecule, major histocompatibility complex, class II invariant chain
Omim ID	142790
Gene Ontology	Hyperlink
Gene Summary	major histocompatibility complex
Other Designations	CD74 antigen CD74 antigen (invariant polypeptide of major histocompatibility complex, class II antigen-associated) HLA-DR-gamma Ia-associated invariant chain MHC HLA-DR gamma chain gamma chain of class II antigens

Pathway

- [Antigen processing and presentation](#)

Disease

- [Cardiovascular Diseases](#)
- [Celiac Disease](#)
- [Diabetes Mellitus](#)
- [Edema](#)