

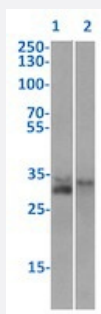
RecomAb™

CD74 recombinant monoclonal antibody, clone LL1 (EPB1)

Catalog # RAB03330

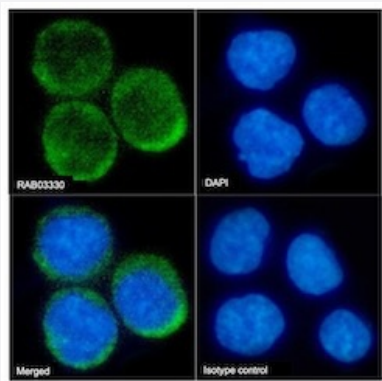
Size 200 ug

Applications



Western Blot

Western blot analysis of Lane 1: human spleen lysate and Lane 2: human tonsil lysate with CD74 recombinant monoclonal antibody, clone LL1 (EPB1) (Cat # RAB03330).



Immunofluorescence

Immunofluorescent staining of Daudi cells with CD74 recombinant monoclonal antibody, clone LL1 (EPB1) (Cat # RAB03330).

Daudi cells on Shi-fix™ cover-slips stained with the chimeric r version of RAB03330 (1:100 dilution) for 1h followed by Alexa Fluor® 488 secondary antibody (1:1000 dilution)- showing membrane and cytoplasmic staining. The nuclear stain is DAPI (blue). Panels show from left-right- top-bottom RAB03330- DAPI- merged channels and an isotype control. The isotype control was an unknown specificity antibody (3.0) followed by staining with Alexa Fluor® 488 secondary antibody.

Specification

Product Description	Rabbit recombinant monoclonal antibody raised against human CD74.
Antibody Species	Rabbit
Immunogen	Original antibody is raised against whole Raji cells or a crude membrane preparation.
Reactivity	Human

Form	Liquid
Isotype	IgG kappa
Recommend Usage	Flow Cytometry Immunofluorescence Immunoprecipitation Radioimmunoassay Western Blot The optimal working dilution should be determined by the end user.
Storage Buffer	In PBS (0.02% Proclin 300)
Storage Instruction	Store at 4°C for 3 months. For long term storage store at -20°C. Aliquot to avoid repeated freezing and thawing.

Applications

- Western Blot

Western blot analysis of Lane 1: human spleen lysate and Lane 2: human tonsil lysate with CD74 recombinant monoclonal antibody, clone LL1 (EPB1) (Cat # RAB03330).

- Immunofluorescence

Immunofluorescent staining of Daudi cells with CD74 recombinant monoclonal antibody, clone LL1 (EPB1) (Cat # RAB03330). Daudi cells on Shi-fix™ cover-slips stained with the chimeric r version of RAB03330 (1:100 dilution) for 1h followed by Alexa Fluor® 488 secondary antibody (1:1000 dilution)- showing membrane and cytoplasmic staining. The nuclear stain is DAPI (blue). Panels show from left-right- top-bottom RAB03330- DAPI- merged channels and an isotype control. The isotype control was an unknown specificity antibody (3.0) followed by staining with Alexa Fluor® 488 secondary antibody.

- Immunoprecipitation

- Radioimmunoassay

- Flow Cytometry

Gene Info — CD74

Entrez GeneID	972
Gene Name	CD74
Gene Alias	DHLA8, HLADG, Ia-GAMMA
Gene Description	CD74 molecule, major histocompatibility complex, class II invariant chain

Omim ID	142790
Gene Ontology	Hyperlink
Gene Summary	major histocompatibility complex
Other Designations	CD74 antigen CD74 antigen (invariant polypeptide of major histocompatibility complex, class II antigen-associated) HLA-DR-gamma a-associated invariant chain MHC HLA-DR gamma chain gamma chain of class II antigens

Pathway

- [Antigen processing and presentation](#)

Disease

- [Cardiovascular Diseases](#)
- [Celiac Disease](#)
- [Diabetes Mellitus](#)
- [Edema](#)