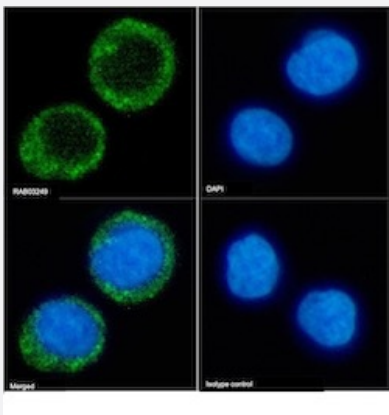


RecomAb™

# CD38 recombinant monoclonal antibody, clone OKT10

Catalog # RAB03249      Size 200 ug

## Applications



### Immunofluorescence

Immunofluorescent staining of Daudi cells with CD38 recombinant monoclonal antibody, clone OKT10 (Cat # RAB03249).

Immunofluorescence analysis of paraformaldehyde fixed Daudi cells on Shi-fix™ coverslips stained with the chimeric r version of RAB03249 at 10 ug/ml for 1h followed by Alexa Fluor® 488 secondary antibody (2 ug/ml)- showing membrane staining. The nuclear stain is DAPI (blue). Panels show from left-right- top-bottom RAB03249- DAPI- merged channels and an isotype control. The isotype control was an unknown specificity antibody (3.0) followed by staining with Alexa Fluor® 488 secondary antibody.

## Specification

Product Description	Rabbit recombinant monoclonal antibody raised against human CD38.
Antibody Species	Rabbit
Immunogen	Original antibody is raised against human thymocytes.
Reactivity	Human
Form	Liquid
Isotype	IgG
Recommend Usage	Flow Cytometry Immunofluorescence Immunoprecipitation The optimal working dilution should be determined by the end user.
Storage Buffer	In PBS with 0.02% Proclin 300

**Storage Instruction**

Store at 4°C for up to 3 months. For longer storage, aliquot and store at -20°C.  
Aliquot to avoid repeated freezing and thawing.

## Applications

- Immunofluorescence

Immunofluorescent staining of Daudi cells with CD38 recombinant monoclonal antibody, clone OKT10 (Cat # RAB03249). Immunofluorescence analysis of paraformaldehyde fixed Daudi cells on Shi-fix™ coverslips stained with the chimeric r version of RAB03249 at 10 ug/ml for 1h followed by Alexa Fluor® 488 secondary antibody (2 ug/ml)- showing membrane staining. The nuclear stain is DAPI (blue). Panels show from left-right- top-bottom RAB03249- DAPI- merged channels and an isotype control. The isotype control was an unknown specificity antibody (3.0) followed by staining with Alexa Fluor® 488 secondary antibody.

- Immunoprecipitation

- Flow Cytometry

## Gene Info — CD38

Entrez GeneID	<a href="#">952</a>
Gene Name	CD38
Gene Alias	T10
Gene Description	CD38 molecule
Omim ID	<a href="#">107270</a>
Gene Ontology	<a href="#">Hyperlink</a>
Gene Summary	CD38 is a novel multifunctional ectoenzyme widely expressed in cells and tissues especially in leukocytes. CD38 also functions in cell adhesion, signal transduction and calcium signaling. [provided by RefSeq]
Other Designations	ADP-ribosyl cyclase/cyclic ADP-ribose hydrolase CD38 antigen CD38 antigen (p45) cyclic ADP-ribose hydrolase

## Pathway

- [Calcium signaling pathway](#)
- [Hematopoietic cell lineage](#)

- [Metabolic pathways](#)
- [Nicotinate and nicotinamide metabolism](#)

## Disease

- [Cell Transformation](#)
- [Child Development Disorders](#)
- [Diabetes Mellitus](#)
- [Genetic Predisposition to Disease](#)
- [Leukemia](#)
- [Lupus Erythematosus](#)
- [Lymphoma](#)
- [Osteoporosis](#)