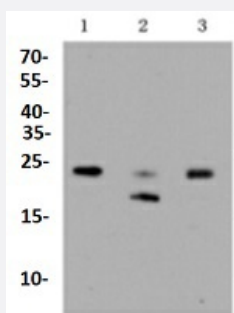


RecomAb™

# RHOC recombinant monoclonal antibody

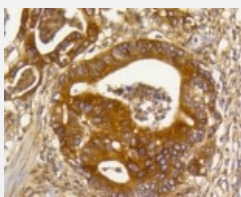
Catalog # RAB02692      Size 100 uL

## Applications



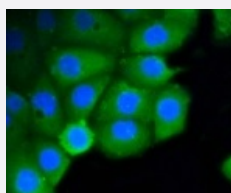
### Western Blot (Cell lysate)

Western blot analysis of Lane1:HepG2 whole cell lysate Lane2:Hela whole cell lysate Lane3:Jurkat whole cell lysate with RHOC recombinant monoclonal antibody (Cat # RAB02692) at 1:1000 dilution.



### Immunohistochemistry (Formalin/PFA-fixed paraffin-embedded sections)

Immunohistochemical analysis of paraffin-embedded human gastric carcinoma tissue using RHOC recombinant monoclonal antibody (Cat # RAB02692). Counter stained with hematoxylin.



### Immunocytochemistry

Immunocytochemical staining of A549 cells using RHOC recombinant monoclonal antibody (Cat # RAB02692)(green). The nuclear counter stain is DAPI (blue). Cells were fixed in paraformaldehyde, permeabilised with 0.25% Triton X-100/PBS.

## Specification

### Product Description

Rabbit recombinant monoclonal antibody raised against RHOC.

<b>Antibody Species</b>	Rabbit
<b>Immunogen</b>	Original antibody is raised against recombinant RHOC.
<b>Theoretical MW (kDa)</b>	24
<b>Reactivity</b>	Human, Mouse, Rat
<b>Specificity</b>	This antibody detects endogenous levels of Rho A/B/C and does not cross-react with related proteins.
<b>Form</b>	Liquid
<b>Purification</b>	Protein A purification
<b>Isotype</b>	IgG
<b>Recommend Usage</b>	Flow Cytometry (1:50-1:100) Immunocytochemistry (1:50-1:200) Immunofluorescence (1:50-1:200) Immunohistochemistry (1:200-1:500) Western Blot (1:1000-1:2000) The optimal working dilution should be determined by the end user.
<b>Storage Buffer</b>	In PBS, pH7.2 (50% glycerol and 0.02% sodium azide)
<b>Storage Instruction</b>	Store at 4°C short term. Aliquot and store at -20°C long term. Avoid freeze-thaw cycles.
<b>Note</b>	This product contains sodium azide: a POISONOUS AND HAZARDOUS SUBSTANCE which should be handled by trained staff only.

## Applications

- Western Blot (Cell lysate)

Western blot analysis of Lane1:HepG2 whole cell lysate Lane2:Hela whole cell lysate Lane3:Jurkat whole cell lysate with RHOC recombinant monoclonal antibody (Cat # RAB02692) at 1:1000 dilution.

- Immunohistochemistry (Formalin/PFA-fixed paraffin-embedded sections)

Immunohistochemical analysis of paraffin-embedded human gastric carcinoma tissue using RHOC recombinant monoclonal antibody (Cat # RAB02692). Counter stained with hematoxylin.

- Immunocytochemistry

Immunocytochemical staining of A549 cells using RHOC recombinant monoclonal antibody (Cat # RAB02692)(green). The nuclear counter stain is DAPI (blue). Cells were fixed in paraformaldehyde, permeabilised with 0.25% Triton X-100/PBS.

- Immunofluorescence
- Flow Cytometry

## Gene Info — RHOC

Entrez GeneID [389](#)

Protein Accession# [P08134](#)

Gene Name RHOC

Gene Alias ARH9, ARHC, H9, MGC1448, MGC61427, RHOH9

Gene Description ras homolog gene family, member C

Omim ID [165380](#)

Gene Ontology [Hyperlink](#)

**Gene Summary** This gene encodes a member of the Rho family of small GTPases, which cycle between inactive GDP-bound and active GTP-bound states and function as molecular switches in signal transduction cascades. Rho proteins promote reorganization of the actin cytoskeleton and regulate cell shape, attachment, and motility. The protein encoded by this gene is prenylated at its C-terminus, and localizes to the cytoplasm and plasma membrane. It is thought to be important in cell locomotion. Overexpression of this gene is associated with tumor cell proliferation and metastasis. Multiple alternatively spliced variants, encoding the same protein, have been identified. [provided by RefSeq]

**Other Designations** OTTHUMP00000013675|OTTHUMP00000013676|OTTHUMP00000013802|OTTHUMP00000013805|OTTHUMP00000013807|OTTHUMP00000013809|RAS-related homolog 9|Rho-related GTP-binding protein RhoC|oncogene RHO H9|rhoC GTPase|small GTP binding protein RhoC

## Disease

- [Angina Pectoris](#)
- [Breast cancer](#)
- [Breast Neoplasms](#)
- [Coronary Vasospasm](#)
- [Genetic Predisposition to Disease](#)
- [HIV Infections](#)