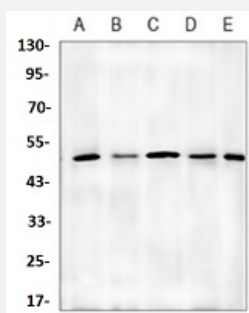


RecomAb™

TUBA4A recombinant monoclonal antibody

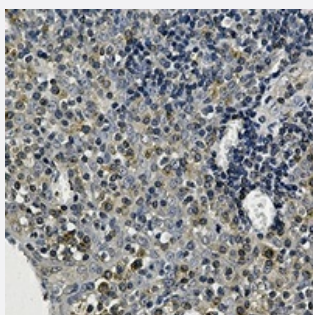
Catalog # RAB02468 Size 100 uL

Applications



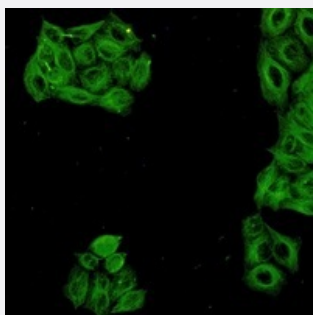
Western Blot

Western blot analysis of mouse brain (A), NIH3T3 (B), HeLa (C), CHOK1 (D), rat brain (E) whole cell lysates with Alpha-tubulin 4a recombinant monoclonal antibody (Cat # RAB02468).



Immunohistochemistry (Formalin/PFA-fixed paraffin-embedded sections)

Immunohistochemical analysis of human tonsil formalin fixed paraffin embedded tissue section using Alpha-tubulin 4a recombinant monoclonal antibody (Cat # RAB02468). The section was pre-treated using heat mediated antigen retrieval with sodium citrate buffer (pH 6.118). The section was then incubated with the antibody at room temperature and detected using an HRP conjugated compact polymer system. DAB was used as the chromogen. The section was then counterstained with haematoxylin and mounted with DPX.



Immunofluorescence

Immunofluorescent analysis of HeLa cells with Alpha-tubulin 4a recombinant monoclonal antibody (Cat # RAB02468). Formalin-fixed cells were permeabilized with 0.1% Triton X-100 in TBS for 5-10 minutes and blocked with 3% BSA-PBS for 30 minutes at room temperature. Cells were probed with the primary antibody in 3%BSA-PBS and incubated overnight at 4 °C in a humidified chamber. Cells were washed with PBST and incubated with a AF488-conjugated secondary antibody (green) in PBS at room temperature in the dark.

Specification

Product Description	Rabbit recombinant monoclonal antibody raised against human TUBA4A.
Antibody Species	Rabbit
Immunogen	Original antibody is raised against a synthetic peptide of human alpha Tubulin.
Theoretical MW (kDa)	50
Reactivity	Hamster, Human, Mouse, Rat
Specificity	Recognizes endogenous levels of Alpha-tubulin 4a protein.
Form	Liquid
Purification	Immunogen affinity chromatography
Isotype	IgG
Recommend Usage	Immunocytochemistry (1:50-1:100) Immunofluorescence (1:50-1:100) Immunohistochemistry (1:50-1:100) Immunoprecipitation(1:10-1:50) Western Blot (1:500-1:1000) The optimal working dilution should be determined by the end user.
Storage Buffer	In 50mM Tris-Glycine, pH 7.4 (0.15M NaCl, 50% Glycerol, 0.01% Sodium azide and 0.05% BSA)
Storage Instruction	Store at 4°C short term. Aliquot and store at -20°C long term. Avoid freeze-thaw cycles.
Note	This product contains sodium azide: a POISONOUS AND HAZARDOUS SUBSTANCE which should be handled by trained staff only.

Applications

- Western Blot

Western blot analysis of mouse brain (A), NIH3T3 (B), Hela (C), CHOK1 (D), rat brain (E) whole cell lysates with Alpha-tubulin 4a recombinant monoclonal antibody (Cat # RAB02468).

- Immunohistochemistry (Formalin/PFA-fixed paraffin-embedded sections)

Immunohistochemical analysis of human tonsil formalin fixed paraffin embedded tissue section using Alpha-tubulin 4a recombinant monoclonal antibody (Cat # RAB02468). The section was pre-treated using heat mediated antigen retrieval with sodium citrate buffer (pH 6.118). The section was then incubated with the antibody at room temperature and detected using an HRP conjugated compact polymer system. DAB was used as the chromogen. The section was then counterstained with haematoxylin and mounted with DPX.

- Immunocytochemistry

- Immunofluorescence

Immunofluorescent analysis of HeLa cells with Alpha-tubulin 4a recombinant monoclonal antibody (Cat # RAB02468). Formalin-fixed cells were permeabilized with 0.1% Triton X-100 in TBS for 5-10 minutes and blocked with 3% BSA-PBS for 30 minutes at room temperature. Cells were probed with the primary antibody in 3%BSA-PBS and incubated overnight at 4 °C in a humidified chamber. Cells were washed with PBST and incubated with a AF488-conjugated secondary antibody (green) in PBS at room temperature in the dark.

- Immunoprecipitation

Gene Info — TUBA4A

Entrez GeneID [7277](#)

Protein Accession# [P68366](#)

Gene Name TUBA4A

Gene Alias FLJ30169, H2-ALPHA, TUBA1

Gene Description tubulin, alpha 4a

Omim ID [191110](#)

Gene Ontology [Hyperlink](#)

Gene Summary Microtubules of the eukaryotic cytoskeleton perform essential and diverse functions and are composed of a heterodimer of alpha and beta tubulin. The genes encoding these microtubule constituents are part of the tubulin superfamily, which is composed of six distinct families. Genes from the alpha, beta and gamma tubulin families are found in all eukaryotes. The alpha and beta tubulins represent the major components of microtubules, while gamma tubulin plays a critical role in the nucleation of microtubule assembly. There are multiple alpha and beta tubulin genes and they are highly conserved among and between species. This gene encodes an alpha tubulin that is a highly conserved homolog of a rat testis-specific alpha tubulin. [provided by RefSeq]

Other Designations tubulin alpha-1 chain|tubulin, alpha 1 (testis specific)

Pathway

- [Gap junction](#)
- [Pathogenic Escherichia coli infection - EHEC](#)

Disease

- [Diabetes Mellitus](#)