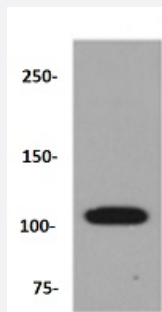


RecomAb™

# ABCG1 recombinant monoclonal antibody

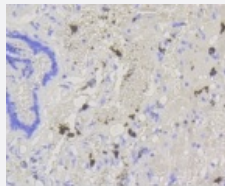
Catalog # RAB02399      Size 100 uL

## Applications



### Western Blot (Tissue lysate)

Western Blot analysis of Lane 1: THP-1 whole cell lysate with ABCG1 recombinant monoclonal antibody (Cat # RAB02399) at 1:1000 dilution.



### Immunohistochemistry (Formalin/PFA-fixed paraffin-embedded sections)

Immunohistochemical analysis of paraffin-embedded human lung tissue using ABCG1 recombinant monoclonal antibody (Cat # RAB02399). Counter stained with hematoxylin.

## Specification

<b>Product Description</b>	Rabbit recombinant monoclonal antibody raised against recombinant ABCG1.
<b>Antibody Species</b>	Rabbit
<b>Theoretical MW (kDa)</b>	110
<b>Reactivity</b>	Human, Rat
<b>Specificity</b>	This antibody detects endogenous levels of ABCG1 and does not cross-react with related proteins.
<b>Form</b>	Liquid

<b>Purification</b>	Protein A purification
<b>Isotype</b>	IgG
<b>Recommend Usage</b>	Immunocytochemistry (1:50-1:100) Immunofluorescence (1:50-1:100) Immunohistochemistry (1:50-1:200) Western Blot (1:500-1:2000)
<b>Storage Buffer</b>	In PBS, pH 7.2 (0.02% sodium azide and 50% glycerol)
<b>Storage Instruction</b>	Store at 4°C short term. Aliquot and store at -20°C long term. Avoid freeze-thaw cycles.
<b>Note</b>	This product contains sodium azide: a POISONOUS AND HAZARDOUS SUBSTANCE which should be handled by trained staff only.

## Applications

- Western Blot (Tissue lysate)

Western Blot analysis of Lane 1:THP-1 whole cell lysate with ABCG1 recombinant monoclonal antibody (Cat # RAB02399) at 1:1000 dilution.

- Immunohistochemistry (Formalin/PFA-fixed paraffin-embedded sections)

Immunohistochemical analysis of paraffin-embedded human lung tissue using ABCG1 recombinant monoclonal antibody (Cat # RAB02399). Counter stained with hematoxylin.

- Immunocytochemistry

- Immunofluorescence

## Gene Info — ABCG1

<b>Entrez GeneID</b>	<a href="#">9619</a>
<b>Protein Accession#</b>	<a href="#">P45844</a>
<b>Gene Name</b>	ABCG1
<b>Gene Alias</b>	ABC8, MGC34313, WHITE1
<b>Gene Description</b>	ATP-binding cassette, sub-family G (WHITE), member 1

Omim ID [603076](#)

Gene Ontology [Hyperlink](#)

**Gene Summary**

The protein encoded by this gene is a member of the superfamily of ATP-binding cassette (ABC) transporters. ABC proteins transport various molecules across extra- and intra-cellular membranes. ABC genes are divided into seven distinct subfamilies (ABC1, MDR/TAP, MRP, ALD, OABP, GCN20, White). This protein is a member of the White subfamily. It is involved in macrophage cholesterol and phospholipids transport, and may regulate cellular lipid homeostasis in other cell types. Six alternative splice variants have been identified. [provided by RefSeq]

**Other Designations**

ABC transporter 8|ATP-binding cassette sub-family G member 1|ATP-binding cassette transporter 8|ATP-binding cassette transporter member 1 of subfamily G|OTTHUMP00000109322|homolog of Drosophila white|white protein homolog (ATP-binding cassette transporter

## Pathway

- [ABC transporters](#)

## Disease

- [Alzheimer disease](#)
- [Atherosclerosis](#)
- [Calcinosis](#)
- [Cardiovascular Diseases](#)
- [Coronary Artery Disease](#)
- [Diabetes Mellitus](#)
- [Edema](#)
- [Hyperlipidemias](#)
- [Kidney Failure](#)
- [Personality Inventory](#)