

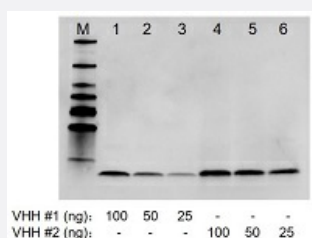
NanoAb™

RecomAb™

Camelid VHH recombinant monoclonal antibody, clone 96A3F5

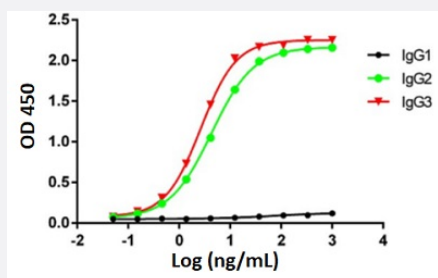
Catalog # RAB02367 Size 200 uL

Applications



Western Blot

Western blot analysis of VHHs with Camelid VHH recombinant monoclonal antibody, clone 96A3F5 (Cat # RAB02367).

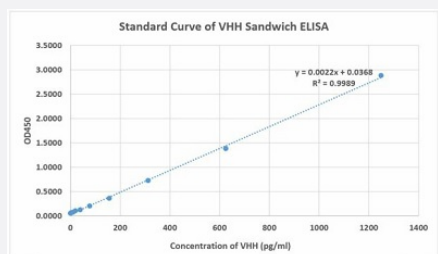


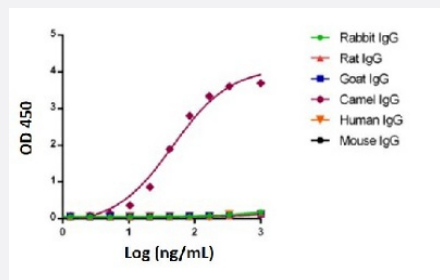
Enzyme-linked Immunoabsorbent Assay

ELISA binding of Camelid VHH recombinant monoclonal antibody, clone 96A3F5 (Cat # RAB02367) with different subclasses camelid IgG. The antibody is specific to camelid heavy chain antibodies (IgG2&3), but not to the camelid conventional antibody (IgG1).

Standard Curve

Sandwich ELISA is developed by using Camelid VHH recombinant monoclonal antibody, clone 96A3F5 (Cat # RAB02367) and Camelid VHH recombinant monoclonal antibody cocktail (HRP)(Cat # RAB02384) as the capture and detection antibodies, respectively.





Cross-reactivity test

Camelid VHH recombinant monoclonal antibody, clone 96A3F5 (Cat # RAB02367) is specific to Camelid IgG and has no cross-reactivity with mouse, rat, rabbit, goat and human immunoglobulins.

This product contains sodium azide: a POISONOUS AND HAZARDOUS SUBSTANCE which should be handled by trained staff only.

This product contains sodium azide: a POISONOUS AND HAZARDOUS SUBSTANCE which should be handled by trained staff only.

Camelid VHH recombinant monoclonal antibody, clone 96A3F5 (Cat # RAB02367) is specific to Camelid IgG and has no cross-reactivity with mouse, rat, rabbit, goat and human immunoglobulins.

Specification

Product Description	Rabbit recombinant monoclonal antibody raised against camelid sdAb (alpaca, llama and camel).
Antibody Species	Rabbit
Immunogen	Original antibody is raised against llama sdAb
Reactivity	Camelid
Specificity	Rabbit Anti-Camelid VHH Antibody is specific for camelid sdAb (alpaca, llama and camel). The monoclonal antibody has no cross-reactivity with mouse, rat, rabbit, chicken, goat or human immunoglobulins.
Form	Liquid
Purification	Protein A affinity purification
Isotype	IgG

Quality Control Testing

Standard Curve and Cross-reactivity test

Standard Curve

Sandwich ELISA is developed by using Camelid VHH recombinant monoclonal antibody, clone 96A3F5 (Cat # RAB02367) and Camelid VHH recombinant monoclonal antibody cocktail (HRP)(Cat # RAB02384) as the capture and detection antibodies, respectively.

Cross-reactivity test

Camelid VHH recombinant monoclonal antibody, clone 96A3F5 (Cat # RAB02367) is specific to Camelid IgG and has no cross-reactivity with mouse, rat, rabbit, goat and human immunoglobulins.

Recommend Usage

ELISA (1:5,000-1:10,000)

Sandwich ELISA

Western blot (1:1,000-1:5,000)

The optimal working dilution should be determined by the end user.

Storage Buffer

In PBS, pH 7.4 (0.02% sodium azide and 50% glycerol)

Storage Instruction

Store at -20°C.

This product is stable for 1 year upon receipt, when handled and stored as instructed.

Note

This product contains sodium azide: a POISONOUS AND HAZARDOUS SUBSTANCE which should be handled by trained staff only.

This product contains sodium azide: a POISONOUS AND HAZARDOUS SUBSTANCE which should be handled by trained staff only.

Camelid VHH recombinant monoclonal antibody, clone 96A3F5 (Cat # RAB02367) is specific to Camelid IgG and has no cross-reactivity with mouse, rat, rabbit, goat and human immunoglobulins.

Applications

- Western Blot

Western blot analysis of VHHs with Camelid VHH recombinant monoclonal antibody, clone 96A3F5 (Cat # RAB02367).

- Enzyme-linked Immunoabsorbent Assay

ELISA binding of Camelid VHH recombinant monoclonal antibody, clone 96A3F5 (Cat # RAB02367) with different subclasses camelid IgG. The antibody is specific to camelid heavy chain antibodies (IgG2&3), but not to the camelid conventional antibody (IgG1).