

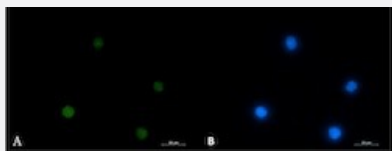
RecomAb™

# ACTL6A recombinant monoclonal antibody, clone R03-1G4

Catalog # RAB01768      Size 100 uL

## Applications

### Immunocytochemistry



Immunocytochemical staining of Jurkat with ACTL6A recombinant monoclonal antibody, clone R03-1G4 (Cat # RAB01768). (A) ACTL6A (green) and (B) DAPI (blue).

## Specification

<b>Product Description</b>	Rabbit recombinant monoclonal antibody raised against human ACTL6A.
<b>Antibody Species</b>	Rabbit
<b>Immunogen</b>	Original antibody is raised against a synthetic peptide of human ACTL6A.
<b>Theoretical MW (kDa)</b>	Calculated MW: 47 kD
<b>Reactivity</b>	Human
<b>Form</b>	Liquid
<b>Purification</b>	Affinity purification
<b>Isotype</b>	IgG
<b>Recommend Usage</b>	Immunocytochemistry Immunofluorescence (1/50-1/200) Immunoprecipitation (1/20) Western Blot (1/500-1/1000) The optimal working dilution should be determined by the end user.

Storage Buffer	In 50 mM Tris-Glycine pH 7.4 (0.15 M NaCl, 40% Glycerol, 0.01% Sodium azide and 0.05% BSA)
Storage Instruction	Store at -20 °C. Aliquot to avoid repeated freezing and thawing.
Note	This product contains sodium azide: a POISONOUS AND HAZARDOUS SUBSTANCE which should be handled by trained staff only.

## Applications

- Western Blot
- Immunocytochemistry  
Immunocytochemical staining of Jurkat with ACTL6A recombinant monoclonal antibody, clone R03-1G4 (Cat # RAB01768). (A) ACTL6A (green) and (B) DAPI (blue).
- Immunofluorescence
- Immunoprecipitation

## Gene Info — ACTL6A

Entrez GeneID	<a href="#">86</a>
Protein Accession#	<a href="#">O96019</a>
Gene Name	ACTL6A
Gene Alias	ACTL6, ARPN-BETA, Arp4, BAF53A, INO80K, MGC5382
Gene Description	actin-like 6A
Omim ID	<a href="#">604958</a>
Gene Ontology	<a href="#">Hyperlink</a>

**Gene Summary**

This gene encodes a family member of actin-related proteins (ARPs), which share significant amino acid sequence identity to conventional actins. Both actins and ARPs have an actin fold, which is an ATP-binding cleft, as a common feature. The ARPs are involved in diverse cellular processes, including vesicular transport, spindle orientation, nuclear migration and chromatin remodeling. This gene encodes a 53 kDa subunit protein of the BAF (BRG1/brm-associated factor) complex in mammals, which is functionally related to SWI/SNF complex in *S. cerevisiae* and *Drosophila*; the latter is thought to facilitate transcriptional activation of specific genes by antagonizing chromatin-mediated transcriptional repression. Together with beta-actin, it is required for maximal ATPase activity of BRG1, and for the association of the BAF complex with chromatin/matrix. Three transcript variants that encode two different protein isoforms have been described. [provided by RefSeq]

**Other Designations**

BAF complex 53 kDa subunit|BAF53|BRG1-associated factor|INO80 complex subunit K|actin-related protein 4|hArpN beta