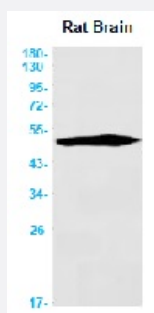


RecomAb™

# TUBA4A recombinant monoclonal antibody, clone R02-9H1

Catalog # RAB01612      Size 100 uL

## Applications



## Western Blot

Western blot analysis of alpha Tubulin in rat Brain lysates using human alpha Tubulin recombinant monoclonal antibody, clone R02-9H1 (Cat # RAB01612).

## Specification

<b>Product Description</b>	Rabbit recombinant monoclonal antibody raised against synthetic peptide of human alpha Tubulin.
<b>Antibody Species</b>	Rabbit
<b>Immunogen</b>	Original antibody is raised against a synthetic peptide corresponding to human alpha Tubulin
<b>Theoretical MW (kDa)</b>	Calculated MW: 50 kD
<b>Reactivity</b>	Human
<b>Form</b>	Liquid
<b>Purification</b>	Affinity purification
<b>Isotype</b>	IgG
<b>Recommend Usage</b>	Immunoprecipitation(1:20) Western Blot (1:500-1:1000) The optimal working dilution should be determined by the end user.
<b>Storage Buffer</b>	In 50 mM Tris-Glycine, pH 7.4 (0.15 M NaCl, 40% Glycerol, 0.01% Sodium azide and 0.05% BSA)

**Storage Instruction**

Store at 4°C for short term. For long term storage store at -20°C.  
Aliquot to avoid repeated freezing and thawing.

**Note**

This product contains sodium azide: a POISONOUS AND HAZARDOUS SUBSTANCE which should be handled by trained staff only.

## Applications

- Western Blot

Western blot analysis of alpha Tubulin in rat Brain lysates using human alpha Tubulin recombinant monoclonal antibody, clone R02-9H1 (Cat # RAB01612).

- Immunoprecipitation

## Gene Info — TUBA4A

**Entrez GeneID**[7277](#)**Protein Accession#**[P68366](#)**Gene Name**

TUBA4A

**Gene Alias**

FLJ30169, H2-ALPHA, TUBA1

**Gene Description**

tubulin, alpha 4a

**Omim ID**[191110](#)**Gene Ontology**[Hyperlink](#)**Gene Summary**

Microtubules of the eukaryotic cytoskeleton perform essential and diverse functions and are composed of a heterodimer of alpha and beta tubulin. The genes encoding these microtubule constituents are part of the tubulin superfamily, which is composed of six distinct families. Genes from the alpha, beta and gamma tubulin families are found in all eukaryotes. The alpha and beta tubulins represent the major components of microtubules, while gamma tubulin plays a critical role in the nucleation of microtubule assembly. There are multiple alpha and beta tubulin genes and they are highly conserved among and between species. This gene encodes an alpha tubulin that is a highly conserved homolog of a rat testis-specific alpha tubulin. [provided by RefSeq]

**Other Designations**

tubulin alpha-1 chain|tubulin, alpha 1 (testis specific)

## Pathway

- [Gap junction](#)
- [Pathogenic Escherichia coli infection - EHEC](#)

## Disease

- [Diabetes Mellitus](#)