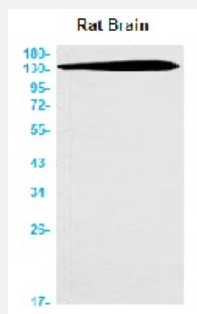


RecomAb™

AXL recombinant monoclonal antibody, clone R06-5B2

Catalog # RAB01574 Size 100 uL

Applications



Western Blot

Western blot analysis of AXL Rabbit mAb in Hela lysates using human AXL recombinant monoclonal antibody, clone R06-5B2 (Cat # RAB01574).

Specification

Product Description	Rabbit recombinant monoclonal antibody raised against human Axl.
Antibody Species	Rabbit
Immunogen	Original antibody is raised against recombinant protein corresponding to human Axl
Theoretical MW (kDa)	Calculated MW: 98 kD
Reactivity	Human
Form	Liquid
Purification	Affinity purification
Isotype	IgG
Recommend Usage	Western Blot (1:500-1:1000) The optimal working dilution should be determined by the end user.
Storage Buffer	In 50mM Tris-Glycine, pH 7.4, (0.15M NaCl, 40% Glycerol, 0.01% Sodium azide and 0.05% BSA)

Storage Instruction

Store at 4°C for short term. For long term storage store at -20°C.
Aliquot to avoid repeated freezing and thawing.

Note

This product contains sodium azide: a POISONOUS AND HAZARDOUS SUBSTANCE which should be handled by trained staff only.

Applications

- Western Blot

Western blot analysis of AXL Rabbit mAb in Hela lysates using human AXL recombinant monoclonal antibody, clone R06-5B2 (Cat # RAB01574).

Gene Info — AXL

Entrez GeneID [558](#)

Protein Accession# [P30530](#)

Gene Name AXL

Gene Alias JTK11, UFO

Gene Description AXL receptor tyrosine kinase

Omim ID [109135](#)

Gene Ontology [Hyperlink](#)

Gene Summary The protein encoded by this gene is a member of the receptor tyrosine kinase subfamily. Although it is similar to other receptor tyrosine kinases, this protein represents a unique structure of the extracellular region that juxtaposes IgL and FNIII repeats. It transduces signals from the extracellular matrix into the cytoplasm by binding growth factors like vitamin K-dependent protein growth-arrest-specific gene 6. It is involved in the stimulation of cell proliferation and can also mediate cell aggregation by homophilic binding. Alternatively spliced transcript variants encoding different isoforms have been identified. [provided by RefSeq]

Other Designations AXL transforming sequence/gene|oncogene AXL

Disease

- [Cardiovascular Diseases](#)
- [Carotid Artery Diseases](#)

- [Diabetes Mellitus](#)
- [Edema](#)
- [Genetic Predisposition to Disease](#)
- [Stroke](#)