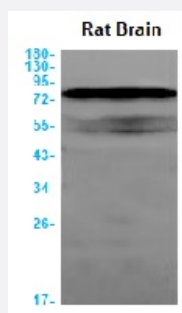


RecomAb™

BIN1 recombinant monoclonal antibody, clone R07-2C1

Catalog # RAB01555 Size 100 uL

Applications



Western Blot

Western blot analysis of BIN1 in rat Brain lysates using human BIN1 recombinant monoclonal antibody, clone R07-2C1 (Cat # RAB01555).

Specification

Product Description	Rabbit recombinant monoclonal antibody raised against human BIN1.
Antibody Species	Rabbit
Immunogen	Original antibody is raised against recombinant protein corresponding to human BIN1
Theoretical MW (kDa)	Calculated MW: 65 kD
Reactivity	Human
Form	Liquid
Purification	Affinity purification
Isotype	IgG
Recommend Usage	Immunofluorescence (1:50-1:200) Immunohistochemistry (1:50-1/100) Western Blot (1:500-1:1000) The optimal working dilution should be determined by the end user.
Storage Buffer	In 50 mM Tris-Glycine, pH 7.4 (0.15 M NaCl, 40% Glycerol, 0.01% Sodium azide and 0.05% BSA)

Storage Instruction

Store at 4°C for short term. For long term storage store at -20°C.
Aliquot to avoid repeated freezing and thawing.

Note

This product contains sodium azide: a POISONOUS AND HAZARDOUS SUBSTANCE which should be handled by trained staff only.

Applications

- Western Blot

Western blot analysis of BIN1 in rat Brain lysates using human BIN1 recombinant monoclonal antibody, clone R07-2C1 (Cat # RAB01555).

- Immunohistochemistry (Formalin/PFA-fixed paraffin-embedded sections)

- Immunohistochemistry (Frozen sections)

- Immunocytochemistry

Gene Info — BIN1

Entrez GeneID[274](#)**Protein Accession#**[O00499](#)**Gene Name**

BIN1

Gene Alias

AMPH2, AMPHL, DKFZp547F068, MGC10367, SH3P9

Gene Description

bridging integrator 1

Omim ID[255200 601248](#)**Gene Ontology**[Hyperlink](#)**Gene Summary**

This gene encodes several isoforms of a nucleocytoplasmic adaptor protein, one of which was initially identified as a MYC-interacting protein with features of a tumor suppressor. Isoforms that are expressed in the central nervous system may be involved in synaptic vesicle endocytosis and may interact with dynamin, synaptotagmin, endophilin, and clathrin. Isoforms that are expressed in muscle and ubiquitously expressed isoforms localize to the cytoplasm and nucleus and activate a caspase-independent apoptotic process. Studies in mouse suggest that this gene plays an important role in cardiac muscle development. Alternate splicing of the gene results in ten transcript variants encoding different isoforms. Aberrant splice variants expressed in tumor cell lines have also been described. [provided by RefSeq]

Other Designations

OTTHUMP00000162179|OTTHUMP00000162183|amphiphysin II|amphiphysin-like|box dependent MYC interacting protein 1

Disease

- [Alzheimer Disease](#)
- [Cerebral Hemorrhage](#)
- [Cognition Disorders](#)
- [Genetic Predisposition to Disease](#)
- [Hypertension](#)
- [Intracranial Hemorrhages](#)
- [Neuropsychological Tests](#)
- [Stroke](#)
- [Subarachnoid Hemorrhage](#)