

RecomAb™

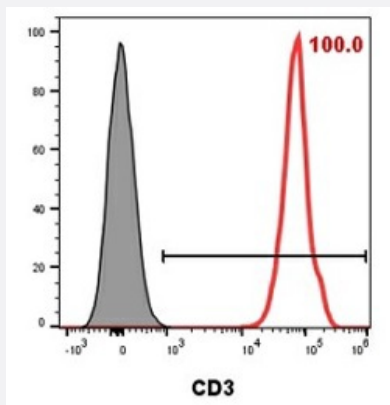
HuAb

CD3 humanized monoclonal antibody, clone H2L2

Catalog # RAB01069-M01J

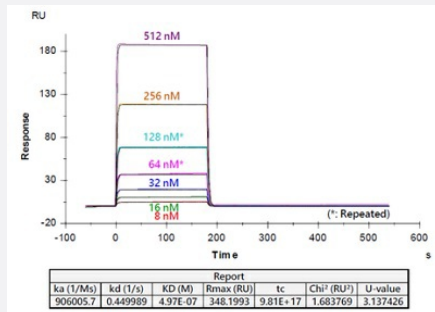
Size 50 ug

Applications



Flow Cytometry

Flow cytometry (transfected cell) analysis of human CD3 T cells were treated with CD3 humanized monoclonal antibody, clone H2L2 (Cat # RAB01069-M01J). This antibody efficiently bound to human CD3 T cells.



Surface Plasmon Resonance

Surface Plasmon Resonance analysis (Biacore Assay) with CD3 humanized monoclonal antibody, clone H2L2 (Cat # RAB01069-M01J).

Specification

Product Description	Humanized recombinant monoclonal antibody raised against CD3.
Antibody Species	Human
Immunogen	Human CD3E & CD3D Heterodimer Proteins.
Reactivity	Human
Specificity	This antibody recognizes human CD3.

Form	Liquid
Purification	Protein A sepharose
Isotype	Human IgG1 with LALAPG mutations in Fc fragment
Storage Buffer	In PBS, pH 7.4
Storage Instruction	Store at -80°C. Aliquot to avoid repeated freezing and thawing.

Applications

- Flow Cytometry

Flow cytometry (transfected cell) analysis of human CD3 T cells were treated with CD3 humanized monoclonal antibody, clone H2L2 (Cat # RAB01069-M01J). This antibody efficiently bound to human CD3 T cells.

- Surface Plasmon Resonance

Surface Plasmon Resonance analysis (Biacore Assay) with CD3 humanized monoclonal antibody, clone H2L2 (Cat # RAB01069-M01J).

Gene Info — CD3D

Entrez GeneID	915
GeneBank Accession#	NM_000732.4
Protein Accession#	NP_000723.1
Gene Name	CD3D
Gene Alias	CD3-DELTA, T3D
Gene Description	CD3d molecule, delta (CD3-TCR complex)
Omim ID	186790 600802
Gene Ontology	Hyperlink

Gene Summary

The protein encoded by this gene is part of the T-cell receptor/CD3 complex (TCR/CD3 complex) and is involved in T-cell development and signal transduction. The encoded membrane protein represents the delta subunit of the CD3 complex, and along with four other CD3 subunits, binds either TCR alpha/beta or TCR gamma/delta to form the TCR/CD3 complex on the surface of T-cells. Defects in this gene are a cause of severe combined immunodeficiency autosomal recessive T-cell-negative/B-cell-positive/NK-cell-positive (SCIDBNK). Two transcript variants encoding different isoforms have been found for this gene. Other variants may also exist, but the full-length nature of their transcripts has yet to be defined. [provided by RefSeq]

Other Designations

CD3D antigen, delta polypeptide|CD3d antigen, delta polypeptide (TiT3 complex)|T-cell receptor T3 delta chain|T-cell surface glycoprotein CD3 delta chain

Pathway

- [Hematopoietic cell lineage](#)
- [Primary immunodeficiency](#)
- [T cell receptor signaling pathway](#)

Disease

- [Celiac Disease](#)
- [Genetic Predisposition to Disease](#)