

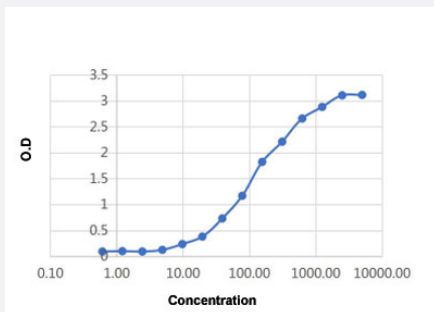
SARS-CoV-2

RecomAb™

SARS-CoV-2 S1 recombinant human antibody, clone S1a

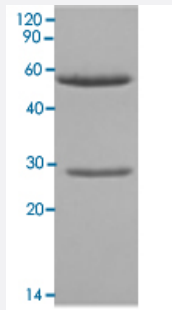
Catalog # RAB01035 Size 100 ug

Applications



Enzyme-linked Immunoabsorbent Assay

The indirect ELISA analysis was coated by SARS-CoV-2 S1 protein, 100 uL/cell at 5 ug/mL, was performed by loading 100 uL per well of the SARS-CoV-2 S1 recombinant human antibody, clone S1a (Cat # RAB01035) at various concentrations.



Specification

Product Description	Human recombinant monoclonal antibody raised against SARS-CoV-2 S1.
Antibody Species	Human
Source / Expression System	293
Immunogen	Original antibody is raised against Recombinant protein corresponding to SARS-CoV-2 S1.
Theoretical MW (kDa)	48.9, 24.2
Reactivity	SARS-CoV-2

Specificity	Binding to the spike protein S1 domain of SARS-CoV-2.
Form	Liquid
Purification	Protein A purification
Purity	>= 95% by SDS-PAGE
Isotype	IgG1
Quality Control Testing	SDS-PAGE Stained with Coomassie Blue
Recommend Usage	ELISA (1:1000-1:10000) SDS-PAGE The optimal working dilution should be determined by the end user.
Storage Buffer	In PBS, pH 7.2
Storage Instruction	Store at 4°C for short term. For long term storage store at -20°C. Aliquot to avoid repeated freezing and thawing.

Applications

- Enzyme-linked Immunoabsorbent Assay

The indirect ELISA analysis was coated by SARS-CoV-2 S1 protein, 100 uL/cell at 5 ug/mL, was performed by loading 100 uL per well of the SARS-CoV-2 S1 recombinant human antibody, clone S1a (Cat # RAB01035) at various concentrations.

- SDS-PAGE