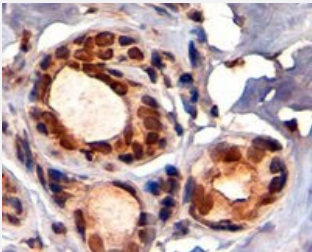


# TRIM28 polyclonal antibody

Catalog # PAB6320      Size 100 ug

## Applications



### Immunohistochemistry (Formalin/PFA-fixed paraffin-embedded sections)

TRIM28 polyclonal antibody (Cat # PAB6320) (4 ug/mL) staining of paraffin embedded human breast. Steamed antigen retrieval with citrate buffer pH 6, AP-staining.

## Specification

<b>Product Description</b>	Goat polyclonal antibody raised against synthetic peptide of TRIM28.
<b>Immunogen</b>	A synthetic peptide corresponding to C-terminus of human TRIM28.
<b>Sequence</b>	C-SSQEELSGGPGDGP
<b>Host</b>	Goat
<b>Theoretical MW (kDa)</b>	92
<b>Reactivity</b>	Human, Mouse
<b>Form</b>	Liquid
<b>Purification</b>	Antigen affinity purification
<b>Concentration</b>	0.5 mg/mL
<b>Recommend Usage</b>	ELISA (1:8000) Western blot (0.2-1 ug/mL) Immunohistochemistry (Formalin/PFA-fixed paraffin-embedded sections) (4-6 ug/mL) Immunofluorescence (5 ug/mL) The optimal working dilution should be determined by the end user.

Storage Buffer	In Tris saline, pH 7.3 (0.5% BSA, 0.02% sodium azide)
Storage Instruction	Store at -20°C. Aliquot to avoid repeated freezing and thawing.
Note	This product contains sodium azide: a POISONOUS AND HAZARDOUS SUBSTANCE which should be handled by trained staff only.

## Applications

- ChIP
- Immunohistochemistry (Formalin/PFA-fixed paraffin-embedded sections)

TRIM28 polyclonal antibody (Cat # PAB6320) (4 ug/mL) staining of paraffin embedded human breast. Steamed antigen retrieval with citrate buffer pH 6, AP-staining.

- Immunofluorescence
- Enzyme-linked Immunoabsorbent Assay

## Gene Info — TRIM28

Entrez GeneID	<a href="#">10155</a>
Protein Accession#	<a href="#">NP_005753.1</a>
Gene Name	TRIM28
Gene Alias	FLJ29029, KAP1, RNF96, TF1B, TIF1B
Gene Description	tripartite motif-containing 28
Omim ID	<a href="#">601742</a>
Gene Ontology	<a href="#">Hyperlink</a>
Gene Summary	The protein encoded by this gene mediates transcriptional control by interaction with the Kruppel-associated box repression domain found in many transcription factors. The protein localizes to the nucleus and is thought to associate with specific chromatin regions. The protein is a member of the tripartite motif family. This tripartite motif includes three zinc-binding domains, a RING, a B-box type 1 and a B-box type 2, and a coiled-coil region. [provided by RefSeq]
Other Designations	KRAB-associated protein 1 nuclear corepressor KAP-1 transcriptional intermediary factor 1-beta tripartite motif-containing 28 protein

## Publication Reference

- [KAP1 Is Associated With Peritoneal Carcinomatosis in Gastric Cancer.](#)

Yokoe T, Toiyama Y, Okugawa Y, Tanaka K, Ohi M, Inoue Y, Mohri Y, Miki C, Kusunoki M.

Annals of Surgical Oncology 2010 Mar; 17(3):821.

Application: IHC-P, Human, Gastric cancer