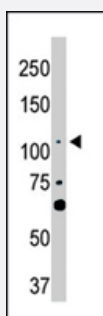


LATS2 polyclonal antibody

Catalog # PAB4559

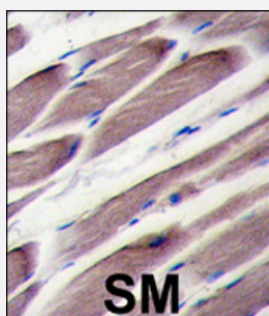
Size 400 uL

Applications



Western Blot (Cell lysate)

The LATS2 polyclonal antibody (Cat # PAB4559) is used in Western blot to detect LATS2 in NIH/3T3 cell lysate .



Immunohistochemistry (Formalin/PFA-fixed paraffin-embedded sections)

Formalin-fixed and paraffin-embedded human skeletal muscle tissue reacted with LATS2 polyclonal antibody (Cat # PAB4559) , which was peroxidase-conjugated to the secondary antibody, followed by DAB staining . This data demonstrates the use of this antibody for immunohistochemistry; clinical relevance has not been evaluated .

Specification

Product Description	Rabbit polyclonal antibody raised against synthetic peptide of LATS2.
Immunogen	A synthetic peptide (conjugated with KLH) corresponding to amino acids 195-224 at internal region of human LATS2.
Host	Rabbit
Reactivity	Human, Mouse
Form	Liquid
Purification	Protein G purification

Recommend Usage	ELISA (1:1000) Western Blot (1:100-500) Immunohistochemistry (1:10-50) The optimal working dilution should be determined by the end user.
Storage Buffer	In PBS (0.09% sodium azide)
Storage Instruction	Store at 4°C. For long term storage store at -20°C. Aliquot to avoid repeated freezing and thawing.
Note	This product contains sodium azide: a POISONOUS AND HAZARDOUS SUBSTANCE which should be handled by trained staff only.

Applications

- Western Blot (Cell lysate)

The LATS2 polyclonal antibody (Cat # PAB4559) is used in Western blot to detect LATS2 in NIH/3T3 cell lysate .

- Immunohistochemistry (Formalin/PFA-fixed paraffin-embedded sections)

Formalin-fixed and paraffin-embedded human skeletal muscle tissue reacted with LATS2 polyclonal antibody (Cat # PAB4559) , which was peroxidase-conjugated to the secondary antibody, followed by DAB staining . This data demonstrates the use of this antibody for immunohistochemistry; clinical relevance has not been evaluated .

- Enzyme-linked Immunoabsorbent Assay

Gene Info — LATS2

Entrez GeneID	26524
Protein Accession#	NP_055387:Q9P2X1
Gene Name	LATS2
Gene Alias	FLJ13161, KPM
Gene Description	LATS, large tumor suppressor, homolog 2 (Drosophila)
Omim ID	604861
Gene Ontology	Hyperlink

Gene Summary

This gene encodes a serine/threonine protein kinase belonging to the LATS tumor suppressor family. The protein localizes to centrosomes during interphase, and early and late metaphase. It interacts with the centrosomal proteins aurora-A and ajuba and is required for accumulation of gamma-tubulin and spindle formation at the onset of mitosis. It also interacts with a negative regulator of p53 and may function in a positive feedback loop with p53 that responds to cytoskeleton damage. Additionally, it can function as a co-repressor of androgen-responsive gene expression. [provided by RefSeq]

Other Designations

LATS (large tumor suppressor, Drosophila) homolog 2|LATS, large tumor suppressor, homolog 2|OTTHUMP00000018106|kinase phosphorylated during mitosis protein|serine/threonine kinase KPM|warts-like kinase

Publication Reference

- [SMG6 regulates DNA damage and cell survival in Hippo pathway kinase LATS2-inactivated malignant mesothelioma.](#)

Koya Suzuki, Masaki Tange, Ryota Yamagishi, Hiroyuki Hanada, Satomi Mukai, Tatsuhiro Sato, Takeshi Tanaka, Tomohiro Akashi, Kenji Kadomatsu, Tohru Maeda, Takashi Miida, Ichiro Takeuchi, Hiroshi Murakami, Yoshitaka Sekido, Yuko Murakami-Tonami.

Cell Death Discovery 2022 Nov; 8(1):446.

Application: WB-Ce, Human, HOMO-D4, MeT-5A, Y-MESO cells

- [Oncogenic kinase signalling.](#)

Blume-Jensen P, Hunter T.

Nature 2001 May; 411(6835):355.

- [Phosphoinositide 3-kinase signalling pathways.](#)

Cantrell DA.

Journal of Cell Science 2001 Apr; 114(Pt 8):1439.

- [The RET proto-oncogene in human cancers.](#)

Jiang SM.

Oncogene 2000 Nov; 19(49):5590.

Disease

- [Tobacco Use Disorder](#)