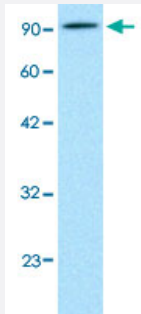


# AEBP1 polyclonal antibody

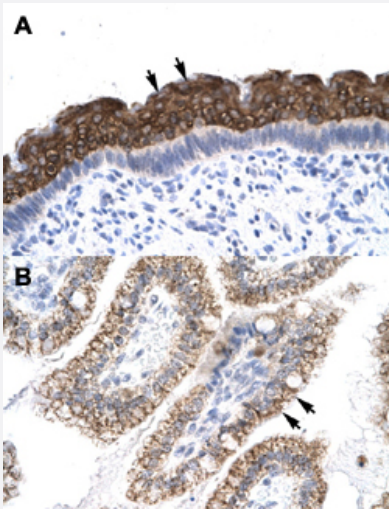
Catalog # PAB29953      Size 100 uL

## Applications



### Western Blot (Cell lysate)

Western Blot analysis of HepG2 cell lysate with AEBP1 polyclonal antibody (Cat # PAB29953) at 0.2-1 ug/mL working concentration.



### Immunohistochemistry (Formalin/PFA-fixed paraffin-embedded sections)

Immunohistochemical staining (Formalin-fixed paraffin-embedded sections) of human spermatophore (A) and human intestine (B) with AEBP1 polyclonal antibody (Cat # PAB29953) at 4-8 ug/mL working concentration.

## Specification

Product Description	Rabbit polyclonal antibody raised against synthetic peptide of human AEBP1.
Immunogen	A synthetic peptide corresponding to N-terminus of human AEBP1.
Sequence	VPPEKTKDKGKKGKDKGPKVPKESLEGSPRPPKKGKEKPPKATKKPKEK
Host	Rabbit

Theoretical MW (kDa)	131
Reactivity	Human
Form	Liquid
Purification	Affinity purification
Recommend Usage	Immunohistochemistry (Formalin/PFA-fixed paraffin-embedded sections) (4-8 ug/mL) Western Blot (0.2-1 ug/mL) The optimal working dilution should be determined by the end user.
Storage Buffer	In PBS (2% sucrose, 0.09% sodium azide).
Storage Instruction	Store at 4°C. For long term storage store at -20°C. Aliquot to avoid repeated freezing and thawing.
Note	This product contains sodium azide: a POISONOUS AND HAZARDOUS SUBSTANCE which should be handled by trained staff only.

## Applications

- Western Blot (Cell lysate)

Western Blot analysis of HepG2 cell lysate with AEBP1 polyclonal antibody (Cat # PAB29953) at 0.2-1 ug/mL working concentration.

- Immunohistochemistry (Formalin/PFA-fixed paraffin-embedded sections)

Immunohistochemical staining (Formalin-fixed paraffin-embedded sections) of human spermatophore (A) and human intestine (B) with AEBP1 polyclonal antibody (Cat # PAB29953) at 4-8 ug/mL working concentration.

## Gene Info — AEBP1

Entrez GeneID	<a href="#">165</a>
GeneBank Accession#	<a href="#">NM_001129</a>
Protein Accession#	<a href="#">NP_001120:Q8IUX7</a>
Gene Name	AEBP1
Gene Alias	ACLP, FLJ33612
Gene Description	AE binding protein 1
Omim ID	<a href="#">602981</a>

**Gene Ontology**[Hyperlink](#)**Gene Summary**

The adipocyte enhancer binding protein 1 is a transcriptional repressor with carboxypeptidase (C P) activity. This protein binds to a regulatory sequence, adipocyte enhancer 1 (AE-1), located in the proximal promoter region of the adipose P2 (aP2) gene, which encodes the adipocyte fatty-acid binding protein. It is characterized as a member of the regulatory B-like CP family. This protein seems to be activated by a novel mechanism, whereby the direct binding of DNA enhances its protease activity. Adipocyte-enhancer binding protein 1 may play a role in differentiated vascular smooth muscle cells. [provided by RefSeq]

**Other Designations**

AE-binding protein 1|adipocyte enhancer binding protein 1|aortic carboxypeptidase-like protein