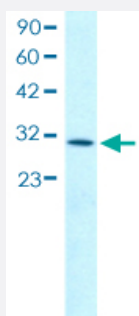


KLF8 polyclonal antibody

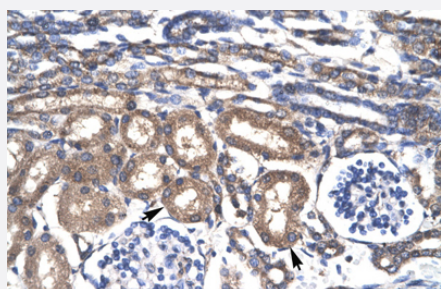
Catalog # PAB29893 Size 100 uL

Applications



Western Blot (Tissue lysate)

Western blot analysis of human kidney tissue lysate with KLF8 polyclonal antibody (Cat # PAB29893).



Immunohistochemistry (Formalin/PFA-fixed paraffin-embedded sections)

Immunohistochemical staining (Formalin-fixed paraffin-embedded sections) of human kidney with KLF8 polyclonal antibody (Cat # PAB29893).

Specification

| | |
|-----------------------------|--|
| Product Description | Rabbit polyclonal antibody raised against partial synthetic protein of human KLF8. |
| Immunogen | A synthetic peptide corresponding to amino acids 89-138 of human KLF8. |
| Sequence | LSFHKPKAPLQPASMLQAPIRPPKPQSSPQTLVVSTSTSDMSTSANIPTV |
| Host | Rabbit |
| Theoretical MW (kDa) | 39 |
| Reactivity | Human |
| Form | Liquid |

| | |
|---------------------|---|
| Purification | Affinity purification |
| Isotype | IgG |
| Recommend Usage | Immunohistochemistry (1:250) Western Blot (1:1000) The optimal working dilution should be determined by the end user. |
| Storage Buffer | In 1X PBS , pH 7.4 (2% sucrose, 0.09% sodium azide). |
| Storage Instruction | Store at 4°C for up to one week. For long term storage store at -20°C. Aliquot to avoid repeated freezing and thawing. |
| Note | This product contains sodium azide: a POISONOUS AND HAZARDOUS SUBSTANCE which should be handled by trained staff only. |

Applications

- Western Blot (Tissue lysate)

Western blot analysis of human kidney tissue lysate with KLF8 polyclonal antibody (Cat # PAB29893).

- Immunohistochemistry (Formalin/PFA-fixed paraffin-embedded sections)

Immunohistochemical staining (Formalin-fixed paraffin-embedded sections) of human kidney with KLF8 polyclonal antibody (Cat # PAB29893).

Gene Info — KLF8

| | |
|--------------------|--|
| Entrez GeneID | 11279 |
| Protein Accession# | O95600 |
| Gene Name | KLF8 |
| Gene Alias | BKLF3, DKFZp686O08126, DXS741, MGC138314, ZNF741 |
| Gene Description | Kruppel-like factor 8 |
| Omim ID | 300286 |
| Gene Ontology | Hyperlink |

Gene Summary

This gene encodes a protein which is a member of the Sp/KLF family of transcription factors. Members of this family contain a C-terminal DNA-binding domain with three Kruppel-like zinc fingers. The encoded protein is thought to play an important role in the regulation of epithelial to mesenchymal transition, a process which occurs normally during development but also during metastasis. A pseudogene has been identified on chromosome 16. Alternative splicing results in multiple transcript variants. [provided by RefSeq]

Other Designations

zinc finger protein 741

Disease

- [Diabetes Mellitus](#)
- [Genetic Predisposition to Disease](#)