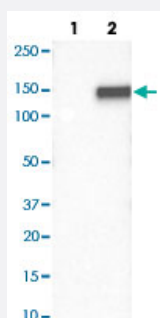


CDH17 polyclonal antibody

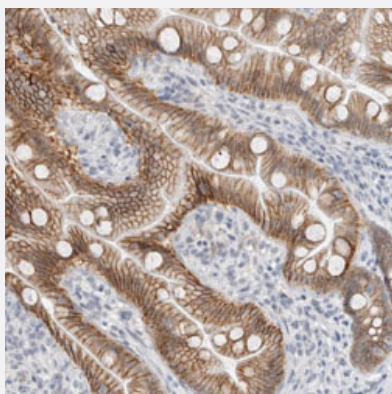
Catalog # PAB29342 Size 100 uL

Applications



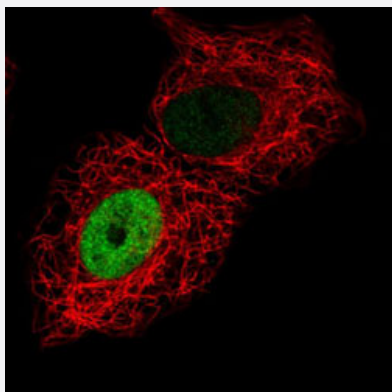
Western Blot (Transfected lysate)

Western blot analysis of Lane 1: Negative control (vector only transfected HEK293T lysate); Lane 2: Over-expression lysate (Co-expressed with a C-terminal myc-DDK tag (~3.1 kDa) in mammalian HEK293T cells) with CDH17 polyclonal antibody (Cat# PAB29342) at 1:100-1:250 dilution.



Immunohistochemistry (Formalin/PFA-fixed paraffin-embedded sections)

Immunohistochemical staining of human small intestine with CDH17 polyclonal antibody (Cat# PAB29342) shows membranous and cytoplasmic positivity in glandular cells at 1:1000-1:2500 dilution.



Immunofluorescence

Immunofluorescent staining of human cell line A549 with CDH17 polyclonal antibody (Cat# PAB29342) under 1-4 ug/mL working concentration shows positivity in nucleus but excluded from the nucleoli.

Specification

Product Description	Rabbit polyclonal antibody raised against recombinant human CDH17.
Immunogen	Recombinant protein corresponding to amino acids of human CDH17.
Sequence	INNVMYFQINNKTGAISLTREGSQELNPAKNPSYNLVISVKDMGGQSENSFSDTTTSVDIIVTENWKA PKPVEMVENSTDP
Host	Rabbit
Reactivity	Human
Form	Liquid
Purification	Antigen affinity purification
Isotype	IgG
Recommend Usage	Immunohistochemistry (1:1000-1:2500) Western Blot (1:100-1:250) Immunofluorescence (1-4 ug/mL) The optimal working dilution should be determined by the end user.
Storage Buffer	In PBS, pH 7.2 (40% glycerol, 0.02% sodium azide)
Storage Instruction	Store at 4°C. For long term storage store at -20°C. Aliquot to avoid repeated freezing and thawing.
Note	This product contains sodium azide: a POISONOUS AND HAZARDOUS SUBSTANCE which should be handled by trained staff only.

Applications

- Western Blot (Transfected lysate)

Western blot analysis of Lane 1: Negative control (vector only transfected HEK293T lysate); Lane 2: Over-expression lysate (Co-expressed with a C-terminal myc-DDK tag (~3.1 kDa) in mammalian HEK293T cells) with CDH17 polyclonal antibody (Cat# PAB29342) at 1:100-1:250 dilution.

- Immunohistochemistry (Formalin/PFA-fixed paraffin-embedded sections)

Immunohistochemical staining of human small intestine with CDH17 polyclonal antibody (Cat# PAB29342) shows membranous and cytoplasmic positivity in glandular cells at 1:1000-1:2500 dilution.

- Immunofluorescence

Immunofluorescent staining of human cell line A549 with CDH17 polyclonal antibody (Cat# PAB29342) under 1-4 ug/mL working concentration shows positivity in nucleus but excluded from the nucleoli.

Gene Info — CDH17

Entrez GeneID [1015](#)

Protein Accession# [Q12864](#)

Gene Name CDH17

Gene Alias CDH16, FLJ26931, HPT-1, HPT1, MGC138218, MGC142024

Gene Description cadherin 17, LI cadherin (liver-intestine)

Omim ID [603017](#)

Gene Ontology [Hyperlink](#)

Gene Summary This gene is a member of the cadherin superfamily, genes encoding calcium-dependent, membrane-associated glycoproteins. The encoded protein is cadherin-like, consisting of an extracellular region, containing 7 cadherin domains, and a transmembrane region but lacking the conserved cytoplasmic domain. The protein is a component of the gastrointestinal tract and pancreatic ducts, acting as an intestinal proton-dependent peptide transporter in the first step in oral absorption of many medically important peptide-based drugs. The protein may also play a role in the morphological organization of liver and intestine. Alternative splicing results in multiple transcript variants. [provided by RefSeq]

Other Designations HPT-1 cadherin|LI cadherin|cadherin 17|cadherin-16|human intestinal peptide-associated transporter HPT-1|human peptide transporter 1|liver-intestine cadherin

Disease

- [Depressive Disorder](#)