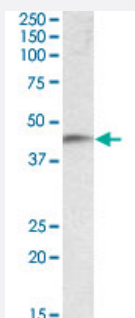


# NDRG2 polyclonal antibody

Catalog # PAB19681

Size 100 ug

## Applications



### Western Blot (Tissue lysate)

NDRG2 polyclonal antibody (Cat # PAB19681) (0.1 ug/mL) staining of human temporal cortex lysate (35 ug protein in RIPA buffer). Primary incubation was 1 hour. Detected by chemiluminescence.

## Specification

<b>Product Description</b>	Goat polyclonal antibody raised against synthetic peptide of NDRG2.
<b>Immunogen</b>	A synthetic peptide corresponding to N-terminus of human NDRG2.
<b>Sequence</b>	KEAELAARILLDQGQ-C
<b>Host</b>	Goat
<b>Theoretical MW (kDa)</b>	40.8
<b>Reactivity</b>	Human, Mouse, Rat
<b>Specificity</b>	This antibody is expected to recognize reported isoform a (NP_963293.1) only. Reported variants represent identical protein: NP_963831.1, NP_963293.1, NP_963834.1, NP_963833.1.
<b>Form</b>	Liquid
<b>Purification</b>	Antigen affinity purification
<b>Recommend Usage</b>	ELISA (1:16000) Western Blot (0.1-0.3 ug/mL) The optimal working dilution should be determined by the end user.

Storage Buffer	In Tris saline, pH 7.3 (0.5% BSA, 0.02% sodium azide)
Storage Instruction	Store at -20°C. Aliquot to avoid repeated freezing and thawing.
Note	This product contains sodium azide: a POISONOUS AND HAZARDOUS SUBSTANCE which should be handled by trained staff only.

## Applications

- Western Blot (Tissue lysate)

NDRG2 polyclonal antibody (Cat # PAB19681) (0.1 ug/mL) staining of human temporal cortex lysate (35 ug protein in RIPA buffer). Primary incubation was 1 hour. Detected by chemiluminescence.

- Enzyme-linked Immunoabsorbent Assay

## Gene Info — NDRG2

Entrez GeneID	<a href="#">57447</a>
Protein Accession#	<a href="#">NP_963293.1</a>
Gene Name	NDRG2
Gene Alias	DKFZp781G1938, FLJ25522, KIAA1248, SYLD
Gene Description	NDRG family member 2
Omim ID	<a href="#">605272</a>
Gene Ontology	<a href="#">Hyperlink</a>

Gene Summary	This gene is a member of the N-myc downregulated gene family which belongs to the alpha/beta hydrolase superfamily. The protein encoded by this gene is a cytoplasmic protein that may play a role in neurite outgrowth. This gene may be involved in glioblastoma carcinogenesis. Several alternatively spliced transcript variants of this gene have been described, but the full-length nature of some of these variants has not been determined. [provided by RefSeq]
--------------	---

Other Designations	N-myc downstream regulator 2 N-myc downstream-regulated gene 2 NDR1-related protein NDR2 OTTHUMP00000164407 cytoplasmic protein Ndr1 syld709613 protein
--------------------	---