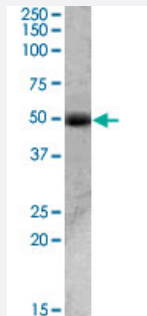


# ACPP polyclonal antibody

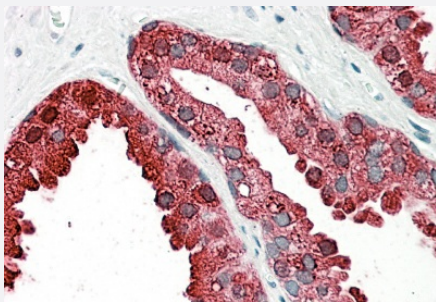
Catalog # PAB19474      Size 100 ug

## Applications



### Western Blot (Tissue lysate)

ACPP polyclonal antibody (Cat # PAB19474)(0.01 ug/mL) staining of human prostate (35 ug protein in RIPA buffer). Primary incubation was 1 hour. Detected by chemiluminescence.



### Immunohistochemistry (Formalin/PFA-fixed paraffin-embedded sections)

ACPP polyclonal antibody (Cat # PAB19474) (3.8 ug/mL) staining of paraffin embedded Human Prostate. Steamed antigen retrieval with citrate buffer pH 6, AP-staining.

## Specification

Product Description	Goat polyclonal antibody raised against synthetic peptide of ACPP.
Immunogen	A synthetic peptide corresponding to internal region of human ACPP.
Sequence	C-NHMKRATQIPSYKK
Host	Goat
Theoretical MW (kDa)	48.3
Reactivity	Human
Form	Liquid

Purification	Ammonium sulfate precipitation
Recommend Usage	ELISA (1:32000) Immunohistochemistry (3-5 ug/mL) Western Blot (0.01-0.03 ug/mL) The optimal working dilution should be determined by the end user.
Storage Buffer	In Tris saline, pH 7.3 (0.5% BSA, 0.02% sodium azide)
Storage Instruction	Store at -20°C. Aliquot to avoid repeated freezing and thawing.
Note	This product contains sodium azide: a POISONOUS AND HAZARDOUS SUBSTANCE which should be handled by trained staff only.

## Applications

- Western Blot (Tissue lysate)

ACPP polyclonal antibody (Cat # PAB19474)(0.01 ug/mL) staining of human prostate (35 ug protein in RIPA buffer). Primary incubation was 1 hour. Detected by chemiluminescence.

- Immunohistochemistry (Formalin/PFA-fixed paraffin-embedded sections)

ACPP polyclonal antibody (Cat # PAB19474) (3.8 ug/mL) staining of paraffin embedded Human Prostate. Steamed antigen retrieval with citrate buffer pH 6, AP-staining.

- Enzyme-linked Immunoabsorbent Assay

## Gene Info — ACPP

Entrez GeneID	<a href="#">55</a>
Protein Accession#	<a href="#">NP_001127666.1;NP_001090.2</a>
Gene Name	ACPP
Gene Alias	ACP-3, ACP3, PAP
Gene Description	acid phosphatase, prostate
Omim ID	<a href="#">171790</a>
Gene Ontology	<a href="#">Hyperlink</a>

**Gene Summary**

This gene encodes an enzyme that catalyzes the conversion of orthophosphoric monoester to alcohol and orthophosphate. It is synthesized under androgen regulation and is secreted by the epithelial cells of the prostate gland. An alternatively spliced transcript variant encoding a longer isoform has been found for this gene. This isoform contains a transmembrane domain and is localized in the plasma membrane-endosomal-lysosomal pathway. [provided by RefSeq]

**Other Designations**

prostatic acid phosphatase

**Pathway**

- [gamma-Hexachlorocyclohexane degradation](#)
- [Riboflavin metabolism](#)

**Disease**

- [Tobacco Use Disorder](#)