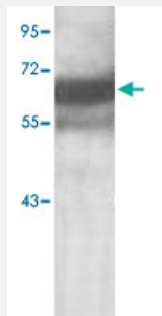


TGFBI polyclonal antibody

Catalog # PAB18905 Size 100 ug

Applications



Western Blot (Tissue lysate)

Western blot analysis of human fetal heart lysate with TGFBI polyclonal antibody (Cat # PAB18905) at 1 : 500 dilution.

Specification

Product Description	Rabbit polyclonal antibody raised against synthetic peptide of TGFBI.
Immunogen	A synthetic peptide corresponding to 15 amino acids at C-terminus of human TGFBI.
Host	Rabbit
Reactivity	Human
Form	Liquid
Recommend Usage	ELISA (1:20000-1:80000) Western Blot (1:200-1:1000) The optimal working dilution should be determined by the end user.
Storage Buffer	In buffer containing 0.02% sodium azide
Storage Instruction	Store at 4°C for three months. For long term storage store at -20°C. Aliquot to avoid repeated freezing and thawing.
Note	This product contains sodium azide: a POISONOUS AND HAZARDOUS SUBSTANCE which should be handled by trained staff only.

Applications

- Western Blot (Tissue lysate)

Western blot analysis of human fetal heart lysate with TGFBI polyclonal antibody (Cat # PAB18905) at 1 : 500 dilution.

- Enzyme-linked Immunoabsorbent Assay

Gene Info — TGFBI

Entrez GeneID [7045](#)

Protein Accession# [Q15582](#)

Gene Name TGFBI

Gene Alias BIGH3, CDB1, CDG2, CDGG1, CSD, CSD1, CSD2, CSD3, EBMD, LCD1

Gene Description transforming growth factor, beta-induced, 68kDa

Omim ID [121820](#) [121900](#) [122200](#) [601692](#) [602082](#) [607541](#) [608470](#) [608471](#)

Gene Ontology [Hyperlink](#)

Gene Summary This gene encodes an RGD-containing protein that binds to type I, II and IV collagens. The RGD motif is found in many extracellular matrix proteins modulating cell adhesion and serves as a ligand recognition sequence for several integrins. This protein plays a role in cell-collagen interactions and may be involved in endochondrial bone formation in cartilage. The protein is induced by transforming growth factor-beta and acts to inhibit cell adhesion. Mutations in this gene are associated with multiple types of corneal dystrophy. [provided by RefSeq]

Other Designations RGD-containing collagen-associated protein|kerato-epithelin

Disease

- [Cardiovascular Diseases](#)
- [Corneal Dystrophies](#)
- [Diabetes Mellitus](#)
- [Edema](#)
- [Genetic Predisposition to Disease](#)