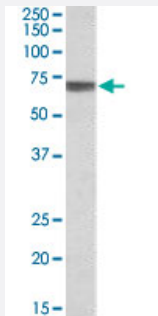


TGFBI polyclonal antibody

Catalog # PAB18750 Size 100 ug

Applications



Western Blot (Tissue lysate)

TGFBI polyclonal antibody (Cat # PAB18750) (0.3 ug/mL) staining of human kidney lysate (35 ug protein in RIPA buffer). Primary incubation was 1 hour. Detected by chemiluminescence.



Immunohistochemistry (Formalin/PFA-fixed paraffin-embedded sections)

TGFBI polyclonal antibody (Cat # PAB18750) (3.8 ug/mL) staining of paraffin embedded human kidney. Steamed antigen retrieval with citrate buffer pH 6, AP-staining.

Specification

Product Description	Goat polyclonal antibody raised against synthetic peptide of TGFBI.
Immunogen	A synthetic peptide corresponding to internal region of human TGFBI.
Sequence	C-QLYTDRTTEKLRPE
Host	Goat
Theoretical MW (kDa)	70
Reactivity	Human
Form	Liquid

Purification	Antigen affinity purification
Concentration	0.5 mg/mL
Recommend Usage	ELISA (1:32000) Western Blot (0.2-0.5 ug/mL) Immunohistochemistry (Formalin/PFA-fixed paraffin-embedded sections) (4-6 ug/mL) The optimal working dilution should be determined by the end user.
Storage Buffer	In Tris saline, pH 7.3 (0.02% sodium azide, 0.5% BSA)
Storage Instruction	Store at -20°C. Aliquot to avoid repeated freezing and thawing.
Note	This product contains sodium azide: a POISONOUS AND HAZARDOUS SUBSTANCE which should be handled by trained staff only.

Applications

- Western Blot (Tissue lysate)

TGFBI polyclonal antibody (Cat # PAB18750) (0.3 ug/mL) staining of human kidney lysate (35 ug protein in RIPA buffer). Primary incubation was 1 hour. Detected by chemiluminescence.

- Immunohistochemistry (Formalin/PFA-fixed paraffin-embedded sections)

TGFBI polyclonal antibody (Cat # PAB18750) (3.8 ug/mL) staining of paraffin embedded human kidney. Steamed antigen retrieval with citrate buffer pH 6, AP-staining.

- Enzyme-linked Immunoabsorbent Assay

Gene Info — TGFBI

Entrez GeneID	7045
Protein Accession#	NP_000349.1
Gene Name	TGFBI
Gene Alias	BIGH3, CDB1, CDG2, CDGG1, CSD, CSD1, CSD2, CSD3, EBMD, LCD1
Gene Description	transforming growth factor, beta-induced, 68kDa
Omim ID	121820 121900 122200 601692 602082 607541 608470 608471
Gene Ontology	Hyperlink

Gene Summary

This gene encodes an RGD-containing protein that binds to type I, II and IV collagens. The RGD motif is found in many extracellular matrix proteins modulating cell adhesion and serves as a ligand recognition sequence for several integrins. This protein plays a role in cell-collagen interactions and may be involved in endochondrial bone formation in cartilage. The protein is induced by transforming growth factor-beta and acts to inhibit cell adhesion. Mutations in this gene are associated with multiple types of corneal dystrophy. [provided by RefSeq]

Other Designations

RGD-containing collagen-associated protein|kerato-epithelin

Disease

- [Cardiovascular Diseases](#)
- [Corneal Dystrophies](#)
- [Diabetes Mellitus](#)
- [Edema](#)
- [Genetic Predisposition to Disease](#)