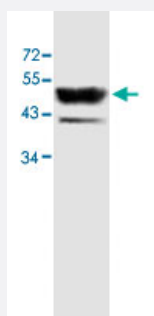


ACTL6B polyclonal antibody

Catalog # PAB18532 Size 100 ug

Applications



Western Blot (Tissue lysate)

Western blot analysis of human fetal skeletal muscle lysate with ACTL6B polyclonal antibody (Cat # PAB18532) at 1 : 500 dilution.

Specification

Product Description	Rabbit polyclonal antibody raised against partial recombinant ACTL6B.
Immunogen	Recombinant protein corresponding to amino acids 178-452 of human ACTL6B.
Host	Rabbit
Reactivity	Human
Specificity	This antibody is specific to ACTL6B.
Form	Liquid
Purification	Protein A purification
Recommend Usage	Western Blot (1:1000-1:2000) ELISA (1:10000-1:80000) The optimal working dilution should be determined by the end user.
Storage Buffer	In buffer containing 0.02% sodium azide
Storage Instruction	Store at 4°C for three months. For long term storage store at -20°C. Aliquot to avoid repeated freezing and thawing.

Note

This product contains sodium azide: a POISONOUS AND HAZARDOUS SUBSTANCE which should be handled by trained staff only.

Applications

- Western Blot (Tissue lysate)

Western blot analysis of human fetal skeletal muscle lysate with ACTL6B polyclonal antibody (Cat # PAB18532) at 1 : 500 dilution.

- Enzyme-linked Immunoabsorbent Assay

Gene Info — ACTL6B

Entrez GeneID [51412](#)

GeneBank Accession# [BC020944](#)

Gene Name ACTL6B

Gene Alias ACTL6, BAF53B

Gene Description actin-like 6B

Gene Ontology [Hyperlink](#)

Gene Summary

The protein encoded by this gene is a member of a family of actin-related proteins (ARPs) which share significant amino acid sequence identity to conventional actins. Both actins and ARPs have an actin fold, which is an ATP-binding cleft, as a common feature. The ARPs are involved in diverse cellular processes, including vesicular transport, spindle orientation, nuclear migration and chromatin remodeling. This gene encodes a subunit of the BAF (BRG1/brm-associated factor) complex in mammals, which is functionally related to SWI/SNF complex in *S. cerevisiae* and *Drosophila*; the latter is thought to facilitate transcriptional activation of specific genes by antagonizing chromatin-mediated transcriptional repression. This subunit may be involved in the regulation of genes by structural modulation of their chromatin, specifically in the brain. [provided by RefSeq]

Other Designations 53 kDa BRG1-associated factor B|actin-like 6|actin-related protein|hArpN alpha

Publication Reference

- [Generation and initial analysis of more than 15,000 full-length human and mouse cDNA sequences.](#)

Strausberg RL, Feingold EA, Grouse LH, Derge JG, Klausner RD, Collins FS, Wagner L, Shenmen CM, Schuler GD, Altschul SF, Zeeberg B, Buetow KH, Schaefer CF, Bhat NK, Hopkins RF, Jordan H, Moore T, Max SI, Wang J, Hsieh F, Diatchenko L, Marusina K, Farmer AA, Rubin GM, Hong L, Stapleton M, Soares MB, Bonaldo MF, Casavant TL, Scheetz TE, Brownstein MJ, Ustin TB, Toshiyuki S, Caminci P, Prange C, Raha SS, Loquellano NA, Peters GJ, Abramson RD, Mullahy SJ, Bosak SA, McEwan PJ, McKernan KJ, Malek JA,

PNAS 2002 Dec; 99(26):16899.

Disease

- [Cardiovascular Diseases](#)
- [Diabetes Mellitus](#)
- [Edema](#)