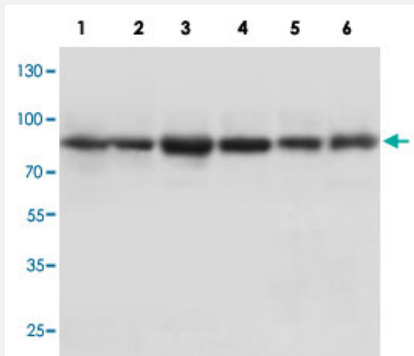


HSP90B1 polyclonal antibody

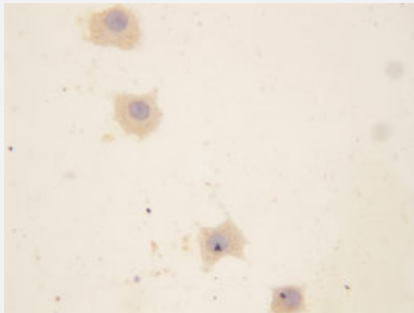
Catalog # PAB18295 Size 100 ug

Applications



Western Blot

Western blot analysis with HSP90B1 polyclonal antibody (Cat # PAB18295).
1 : Rat lung tissue lysate. 2 : Rat brain tissue lysate. 3 : MM453 whole cell lysate. 4 : HeLa whole cell lysate. 5 : Raji whole cell lysate. 6 : MCF-7 whole cell lysate.



Immunocytochemistry

Immunocytochemical staining of MCF-7 cell with HSP90B1 polyclonal antibody (Cat # PAB18295).

Specification

Product Description	Rabbit polyclonal antibody raised against partial synthetic peptide of human HSP90B1.
Immunogen	A synthetic peptide corresponding to amino acids 687-700 at the middle region of human HSP90B1.
Sequence	INPRHPLIRDMLRR
Host	Rabbit
Theoretical MW (kDa)	90
Reactivity	Human, Mouse, Rat

Specificity	The synthetic peptide of this antibody is identical to the related mouse and rat sequences.
Form	Lyophilized
Purification	Immunogen affinity purification
Isotype	IgG
Recommend Usage	Immunocytochemistry (0.5-1 ug/mL) Immunohistochemistry (0.5-1 ug/mL) Western Blot (0.1-0.5 ug/mL) The optimal working dilution should be determined by the end user.
Storage Buffer	Lyophilized from 0.9 mg NaCl, 0.2 mg Na ₂ HPO ₄ , 5 mg BSA, 0.05 mg sodium azide, 0.05 mg Thimerosal
Storage Instruction	Store at -20°C. After reconstitution with 200 uL of deionized water and concentration will be 500 ug/mL, store at -20°C. Aliquot to avoid repeated freezing and thawing.
Note	This product contains sodium azide and thimerosal: POISONOUS AND HAZARDOUS SUBSTANCE which should be handled by trained staff only.

Applications

- Western Blot

Western blot analysis with HSP90B1 polyclonal antibody (Cat # PAB18295).

1 : Rat lung tissue lysate. 2 : Rat brain tissue lysate. 3 : MM453 whole cell lysate. 4 : HeLa whole cell lysate. 5 : Raji whole cell lysate. 6 : MCF-7 whole cell lysate.

- Immunohistochemistry (Formalin/PFA-fixed paraffin-embedded sections)

- Immunohistochemistry (Frozen sections)

- Immunocytochemistry

Immunocytochemical staining of MCF-7 cell with HSP90B1 polyclonal antibody (Cat # PAB18295).

Gene Info — HSP90B1

Entrez GeneID [7184](#)

Protein Accession# [P14625](#)

Gene Name	HSP90B1
Gene Alias	ECGP, GP96, GRP94, TRA1
Gene Description	heat shock protein 90kDa beta (Grp94), member 1
Omim ID	191175
Gene Ontology	Hyperlink
Gene Summary	HSP90 proteins are highly conserved molecular chaperones that have key roles in signal transduction, protein folding, protein degradation, and morphologic evolution. HSP90 proteins normally associate with other cochaperones and play important roles in folding newly synthesized proteins or stabilizing and refolding denatured proteins after stress. HSP90B1 is an endoplasmic reticulum HSP90 protein. Other HSP90 proteins are found in cytosol (see HSP90AA1; MIM 140571) and mitochondria (TRAP1; MIM 606219) (Chen et al., 2005 [PubMed 16269234]).[supplied by OMIM]
Other Designations	Tumor rejection antigen-1 (gp96) endothelial cell (HBMEC) glycoprotein glucose regulated protein, 94 kDa heat shock protein 90kDa beta, member 1 tumor rejection antigen (gp96) 1

Pathway

- [Pathways in cancer](#)
- [Prostate cancer](#)

Disease

- [Bipolar Disorder](#)
- [Cardiovascular Diseases](#)
- [Diabetes Mellitus](#)
- [Edema](#)
- [Kidney Failure](#)
- [Schizophrenia](#)