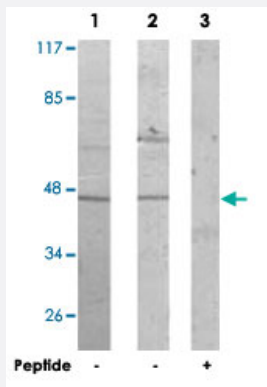


# ACTL6A polyclonal antibody

Catalog # PAB18052      Size 100 ug

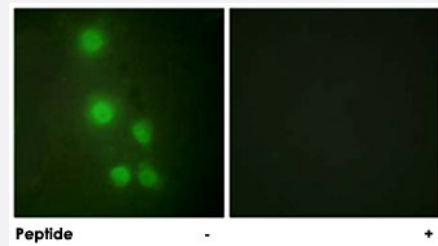
## Applications



### Western Blot (Cell lysate)

Western blot analysis of extracts from Jurkat cells (Lane 1) and COLO 205 cells (Lane 2 and lane 3), using ACTL6A polyclonal antibody (Cat # PAB18052).

Peptide "+" means "with peptide blocking".



### Immunofluorescence

Immunofluorescence analysis of HUVEC cells, using ACTL6A polyclonal antibody (Cat # PAB18052).

Peptide "+" means "with peptide blocking".

## Specification

Product Description	Rabbit polyclonal antibody raised against synthetic peptide of ACTL6A.
Immunogen	A synthetic peptide corresponding to human ACTL6A.
Host	Rabbit
Reactivity	Human, Mouse, Rat
Specificity	This antibody is specific to ACTL6A.
Form	Liquid

<b>Recommend Usage</b>	Western Blot (1:500~1:1000) Immunofluorescence (1:500~1:1000) ELISA (1:10000) The optimal working dilution should be determined by the end user.
<b>Storage Buffer</b>	In PBS, 150mM NaCl, pH 7.4 (50% glycerol, 0.02% sodium azide)
<b>Storage Instruction</b>	Store at -20°C. Aliquot to avoid repeated freezing and thawing.
<b>Note</b>	This product contains sodium azide: a POISONOUS AND HAZARDOUS SUBSTANCE which should be handled by trained staff only.

## Applications

- Western Blot (Cell lysate)

Western blot analysis of extracts from Jurkat cells (Lane 1) and COLO 205 cells (Lane 2 and lane 3), using ACTL6A polyclonal antibody (Cat # PAB18052).

Peptide "+" means "with peptide blocking".

- Immunofluorescence

Immunofluorescence analysis of HUVEC cells, using ACTL6A polyclonal antibody (Cat # PAB18052).

Peptide "+" means "with peptide blocking".

- Enzyme-linked Immunoabsorbent Assay

## Gene Info — ACTL6A

<b>Entrez GeneID</b>	<a href="#">86</a>
<b>Protein Accession#</b>	<a href="#">O96019</a>
<b>Gene Name</b>	ACTL6A
<b>Gene Alias</b>	ACTL6, ARPN-BETA, Arp4, BAF53A, INO80K, MGC5382
<b>Gene Description</b>	actin-like 6A
<b>Omim ID</b>	<a href="#">604958</a>
<b>Gene Ontology</b>	<a href="#">Hyperlink</a>

## Gene Summary

This gene encodes a family member of actin-related proteins (ARPs), which share significant amino acid sequence identity to conventional actins. Both actins and ARPs have an actin fold, which includes an ATP-binding cleft, as a common feature. The ARPs are involved in diverse cellular processes, including vesicular transport, spindle orientation, nuclear migration and chromatin remodeling. This gene encodes a 53 kDa subunit protein of the BAF (BRG1/brm-associated factor) complex in mammals, which is functionally related to SWI/SNF complex in *S. cerevisiae* and *Drosophila*; the latter is thought to facilitate transcriptional activation of specific genes by antagonizing chromatin-mediated transcriptional repression. Together with beta-actin, it is required for maximal ATPase activity of BRG1, and for the association of the BAF complex with chromatin/matrix. Three transcript variants that encode two different protein isoforms have been described. [provided by RefSeq]

## Other Designations

BAF complex 53 kDa subunit|BAF53|BRG1-associated factor|INO80 complex subunit K|actin-related protein 4|hArpN beta

## Publication Reference

- [Toward a catalog of human genes and proteins: sequencing and analysis of 500 novel complete protein coding human cDNAs.](#)

Wiemann S, Weil B, Wellenreuther R, Gassenhuber J, Glassl S, Ansorge W, Bocher M, Blocker H, Bauersachs S, Blum H, Lauber J, Dusterhoft A, Beyer A, Kohrer K, Strack N, Mewes HW, Ottenwalder B, Obermaier B, Tampe J, Heubner D, Wambutt R, Korn B, Klein M, Poustka A.

Genome Research 2001 Mar; 11(3):422.

- [Two isoforms of a human actin-related protein show nuclear localization and mutually selective expression between brain and other tissues.](#)

Harata M, Mochizuki R, Mizuno S.

Bioscience, Biotechnology, and Biochemistry 1999 May; 63(5):917.

- [Rapid and phosphoinositol-dependent binding of the SWI/SNF-like BAF complex to chromatin after T lymphocyte receptor signaling.](#)

Zhao K, Wang W, Rando OJ, Xue Y, Swiderek K, Kuo A, Crabtree GR.

Cell 1998 Nov; 95(5):625.

Application: IF, WB-Ce, Human, Jurkat, SW-13 cells