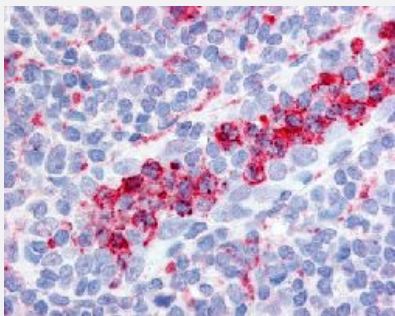


ITGAX polyclonal antibody

Catalog # PAB16499

Size 50 ug

Applications



Immunohistochemistry (Formalin/PFA-fixed paraffin-embedded sections)

Immunohistochemical (Formalin/PFA-fixed paraffin-embedded sections) staining in human tonsil (neutrophils) with ITGAX polyclonal antibody (Cat # PAB16499).

Specification

Product Description	Rabbit polyclonal antibody raised against synthetic peptide of ITGAX.
Immunogen	A synthetic peptide (conjugated with KLH) corresponding to human ITGAX.
Host	Rabbit
Reactivity	Human
Specificity	Internal domain of human.
Form	Liquid
Purification	Immunoaffinity purification
Recommend Usage	Immunohistochemistry (Formalin/PFA-fixed paraffin-embedded sections) (10 ug/mL) The optimal working dilution should be determined by the end user.
Storage Buffer	In PBS (0.09% sodium azide)
Storage Instruction	Store at 4°C. For long term storage store at -80°C. Aliquot to avoid repeated freezing and thawing.

Note

This product contains sodium azide: a POISONOUS AND HAZARDOUS SUBSTANCE which should be handled by trained staff only.

Applications

- Immunohistochemistry (Formalin/PFA-fixed paraffin-embedded sections)

Immunohistochemical (Formalin/PFA-fixed paraffin-embedded sections) staining in human tonsil (neutrophils) with ITGAX polyclonal antibody (Cat # PAB16499).

Gene Info — ITGAX

Entrez GeneID [3687](#)

Protein Accession# [P20702](#)

Gene Name ITGAX

Gene Alias CD11C, SLEB6

Gene Description integrin, alpha X (complement component 3 receptor 4 subunit)

Omim ID [151510](#)

Gene Ontology [Hyperlink](#)

Gene Summary This gene encodes the integrin alpha X chain protein. Integrins are heterodimeric integral membrane proteins composed of an alpha chain and a beta chain. This protein combines with the beta 2 chain (ITGB2) to form a leukocyte-specific integrin referred to as inactivated-C3b (iC3b) receptor 4 (CR4). The alpha X beta 2 complex seems to overlap the properties of the alpha M beta 2 integrin in the adherence of neutrophils and monocytes to stimulated endothelium cells, and in the phagocytosis of complement coated particles. [provided by RefSeq]

Other Designations OTTHUMP00000163299|integrin alpha X|integrin, alpha X (antigen CD11C (p150), alpha polypeptide)|leu M5, alpha subunit|leukocyte surface antigen p150,95, alpha subunit|myeloid membrane antigen, alpha subunit|p150 95 integrin alpha chain

Pathway

- [Regulation of actin cytoskeleton](#)

Disease

- [Genetic Predisposition to Disease](#)
- [Helicobacter Infections](#)
- [Lupus Erythematosus](#)
- [Stomach Ulcer](#)