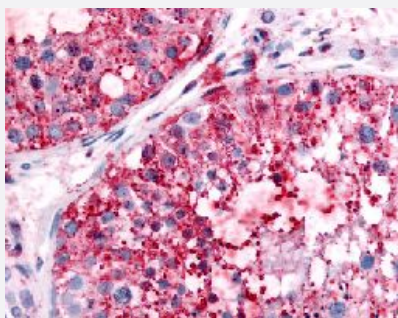


# UCHL3 polyclonal antibody

Catalog # PAB16472

Size 50 ug

## Applications



### Immunohistochemistry (Formalin/PFA-fixed paraffin-embedded sections)

Immunohistochemical (Formalin/PFA-fixed paraffin-embedded sections) staining in human testis with UCHL3 polyclonal antibody (Cat # PAB16472).

## Specification

<b>Product Description</b>	Rabbit polyclonal antibody raised against synthetic peptide of UCHL3.
<b>Immunogen</b>	A synthetic peptide (conjugated with KLH) corresponding to human UCHL3.
<b>Host</b>	Rabbit
<b>Reactivity</b>	Bovine, Dog, Horse, Human, Monkey, Mouse, Rat
<b>Specificity</b>	Internal domain of human.
<b>Form</b>	Liquid
<b>Purification</b>	Immunoaffinity purification
<b>Recommend Usage</b>	Immunohistochemistry (Formalin/PFA-fixed paraffin-embedded sections) (10 ug/mL) The optimal working dilution should be determined by the end user.
<b>Storage Buffer</b>	In PBS (0.09% sodium azide)
<b>Storage Instruction</b>	Store at 4°C. For long term storage store at -80°C. Aliquot to avoid repeated freezing and thawing.

**Note**

This product contains sodium azide: a POISONOUS AND HAZARDOUS SUBSTANCE which should be handled by trained staff only.

## Applications

- Immunohistochemistry (Formalin/PFA-fixed paraffin-embedded sections)

Immunohistochemical (Formalin/PFA-fixed paraffin-embedded sections) staining in human testis with UCHL3 polyclonal antibody (Cat # PAB16472).

## Gene Info — UCHL3

Entrez GeneID	<a href="#">7347</a>
---------------	----------------------

Protein Accession#	<a href="#">P15374</a>
--------------------	------------------------

Gene Name	UCHL3
-----------	-------

Gene Alias	UCH-L3
------------	--------

Gene Description	ubiquitin carboxyl-terminal esterase L3 (ubiquitin thiolesterase)
------------------	---

Omim ID	<a href="#">603090</a>
---------	------------------------

Gene Ontology	<a href="#">Hyperlink</a>
---------------	---------------------------

Other Designations	OTTHUMP00000018509 ubiquitin carboxyl-terminal esterase L3 ubiquitin thiolesterase
--------------------	--