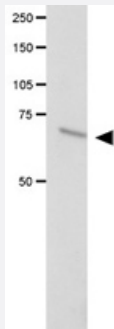


FANCC polyclonal antibody

Catalog # PAB12372 Size 100 uL

Applications



Western Blot (Transfected lysate)

Western blot analysis of FANCC in transfected COS-1 cell lysate using FANCC polyclonal antibody (Cat # PAB12372).

Specification

Product Description	Rabbit polyclonal antibody raised against synthetic peptide of FANCC.
Immunogen	A synthetic peptide corresponding to amino acids 450-558 of FANCC.
Host	Rabbit
Reactivity	Human, Mouse, Rat
Form	Liquid
Quality Control Testing	Antibody Reactive Against Synthetic Peptide.
Recommend Usage	Western Blot (1:1000) The optimal working dilution should be determined by the end user.
Storage Buffer	In antiserum
Storage Instruction	Store at -20°C or -80°C. Aliquot to avoid repeated freezing and thawing.

Applications

- Western Blot (Transfected lysate)

Western blot analysis of FANCC in transfected COS-1 cell lysate using FANCC polyclonal antibody (Cat # PAB12372).

Publication Reference

- [A role for the Fanconi anemia C protein in maintaining the DNA damage-induced G2 checkpoint.](#)

Freie BW, Ciccone SL, Li X, Plett PA, Orschell CM, Srour EF, Hanenberg H, Schindler D, Lee SH, Clapp DW.

The Journal of Biological Chemistry 2004 Dec; 279(49):50986.