

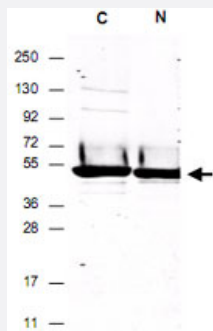
# DYKDDDDK tag polyclonal antibody

Catalog # PAB10340

Size 250 ug

## Applications

### Western Blot (Recombinant protein)



DYKDDDDK tag polyclonal antibody (Cat # PAB10340) to detect FLAG™ conjugated proteins detects both C terminal linked and N terminal linked FLAG™ tagged recombinant proteins by western blot.

This antibody was used at a dilution of 1 : 2,500 to detect 1.0 ug of recombinant protein containing either the FLAG™ epitope tag linked at the carboxy (C) or the amino (N) terminus of the recombinant protein.

A 4-20% gradient gel was used to resolve the protein by SDS-PAGE.

The protein was transferred to nitrocellulose using standard methods.

After blocking, the membrane was probed with the primary antibody for 1 h at room temperature followed by washes and reaction with a 1 : 10,000 dilution of IRDye® 800 conjugated Gt-a-Rabbit IgG (H&L) MX10 for 30 min at room temperature.

LICOR's Odyssey® Infrared Imaging System was used to scan and process the image.

## Specification

<b>Product Description</b>	Rabbit polyclonal antibody raised against synthetic peptides of DYKDDDDK tag.
<b>Immunogen</b>	A synthetic peptide (conjugated with KLH) corresponding to DYKDDDDK tag.
<b>Host</b>	Rabbit
<b>Specificity</b>	This antibody reacts with FLAG conjugated proteins.
<b>Form</b>	Liquid
<b>Quality Control Testing</b>	Antibody Reactive Against Synthetic Peptide.

<b>Recommend Usage</b>	ELISA (1:90000-1:250000) Western Blot (1:2000-1:10000) The optimal working dilution should be determined by the end user.
<b>Storage Buffer</b>	In 20 mM potassium phosphate buffer, 150 mM NaCl, pH 7.2 (0.01% sodium azide)
<b>Storage Instruction</b>	Store at 4°C. For long term storage store at -20°C. Aliquot to avoid repeated freezing and thawing.
<b>Note</b>	This product contains sodium azide: a POISONOUS AND HAZARDOUS SUBSTANCE which should be handled by trained staff only.

## Applications

- Western Blot (Recombinant protein)

DYKDDDDK tag polyclonal antibody (Cat # PAB10340) to detect FLAG™ conjugated proteins detects both C terminal linked and N terminal linked FLAG™ tagged recombinant proteins by western blot.

This antibody was used at a dilution of 1 : 2,500 to detect 1.0 ug of recombinant protein containing either the FLAG™ epitope tag linked at the carboxy (C) or the amino (N) terminus of the recombinant protein.

A 4-20% gradient gel was used to resolve the protein by SDS-PAGE.

The protein was transferred to nitrocellulose using standard methods.

After blocking, the membrane was probed with the primary antibody for 1 h at room temperature followed by washes and reaction with a 1 : 10,000 dilution of IRDye® 800 conjugated Gt-a-Rabbit IgG (H&L) MX10 for 30 min at room temperature.

LICOR's Odyssey® Infrared Imaging System was used to scan and process the image.

- Enzyme-linked Immunoabsorbent Assay

## Publication Reference

- [Identification of new tag sequences with differential and selective recognition properties for the anti-FLAG monoclonal antibodies M1, M2 and M5.](#)

Slootstra JW, Kuperus D, Plückthun A, Muelen RH.

Molecular Diversity 1997 Mar; 2(3):156.

- [Double tagging recombinant A1- and A2A-adenosine receptors with hexahistidine and the FLAG epitope. Development of an efficient generic protein purification procedure.](#)

Robeva AS, Woodard R, Luthin DR, Taylor HE, Linden J.

Biochemical Pharmacology 1996 Feb; 51(4):545.

Application: IP, Hamster, CHO-K1 cells

- [Vectors for expression and secretion of FLAG epitope-tagged proteins in mammalian cells.](#)

Chubet RG, Brizzard BL.

Biotechniques 1996 Jan; 20(1):136.

Application: ICC, IHC, IP, WB-Tr, Monkey, COS-1 cells