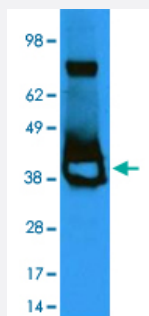


lacI polyclonal antibody

Catalog # PAB10255 Size 100 ug

Applications



Western Blot (Recombinant protein)

Western blot using lacI polyclonal antibody (Cat # PAB10255) shows detection of a 38 kDa band corresponding to recombinant lacI (arrowhead). The blot was blocked with 5% BLOTTO in TTBS overnight at 4°C. Primary antibody was used at a 1 : 1,000 dilution followed by reaction with a 1 : 10,000 dilution of HRP goat anti-rabbit IgG. ECL was used for detection.

Personal communication, S. Hughes & M. Abram, NCI, Bethesda, MD.

Specification

Product Description	Rabbit polyclonal antibody raised against full length recombinant lacI.
Immunogen	Recombinant protein corresponding to full length <i>Escherichia coli</i> (strain DH10B) lacI.
Host	Rabbit
Specificity	This antibody reacts with recombinant Lac I protein. A BLAST analysis was used to suggest cross-reactivity with Lac I from DNA-binding transcriptional repressor in <i>Escherichia coli</i> (strain DH10B) and transcriptional repressor of the lac operon in <i>Shigella sonnei</i> (strain Ss046) based on a 100% homology with the immunizing sequence.
Form	Liquid
Quality Control Testing	Antibody Reactive Against Recombinant Protein.
Recommend Usage	ELISA (1:90000-1:100000) Western Blot (1:500-1:2000) The optimal working dilution should be determined by the end user.
Storage Buffer	In 20 mM KH ₂ PO ₄ , 150 mM NaCl, pH 7.2 (0.01% sodium azide)
Storage Instruction	Store at 4°C. For long term storage store at -20°C. Aliquot to avoid repeated freezing and thawing.

Note

This product contains sodium azide: a POISONOUS AND HAZARDOUS SUBSTANCE which should be handled by trained staff only.

Applications

- Western Blot (Recombinant protein)

Western blot using lacI polyclonal antibody (Cat # PAB10255) shows detection of a 38 kDa band corresponding to recombinant lacI (arrowhead). The blot was blocked with 5% BLOTTO in TTBS overnight at 4°C. Primary antibody was used at a 1 : 1,000 dilution followed by reaction with a 1 : 10,000 dilution of HRP goat anti-rabbit IgG. ECL was used for detection. Personal communication, S. Hughes & M. Abram, NCI, Bethesda, MD.

- Enzyme-linked Immunoabsorbent Assay

Gene Info — lacI

Entrez GeneID	945007
---------------	------------------------

Protein Accession#	AAA24052;P03023
--------------------	---------------------------------

Gene Name	lacI
-----------	------

Gene Alias	ECK0342, JW0336
------------	-----------------

Gene Description	DNA-binding transcriptional repressor
------------------	---------------------------------------

Gene Ontology	Hyperlink
---------------	---------------------------

Other Designations	-
--------------------	---

Publication Reference

- [Design and analysis of LacI-repressed promoters and DNA-looping in a cyanobacterium.](#)

Camsund D, Heidorn T, Lindblad P.

Journal of Biological Engineering 2014 Jan; 8(1):4.

Application: WB, E. coli, Synechocystis, DH5αZ1, NEB5α, Synechocystis cells

- [Telomeric DNA damage is irreparable and causes persistent DNA-damage-response activation.](#)

Fumagalli M, Rossiello F, Clerici M, Barozzi S, Cittaro D, Kaplunov JM, Bucci G, Dobrev M, Matti V, Beausejour CM, Herbig U, Longhese MP, d'Adda di Fagagna F.

Nature Cell Biology 2012 Mar; 14(4):355.

Application: IF, Mouse, NIH 2/4 cells

- [Mutations in the U5 sequences adjacent to the primer binding site do not affect tRNA cleavage by rous sarcoma virus RNase H but do cause aberrant integrations in vivo.](#)

Oh J, Chang KW, Hughes SH.

Journal of Virology 2006 Jan; 80(1):451.

- [Construction and characterization of a replication-competent retroviral shuttle vector plasmid.](#)

Oh J, Julias JG, Ferris AL, Hughes SH.

Journal of Virology 2002 Feb; 76(4):1762.

- [Exposure of antigenic sites during immunization. Monoclonal antibodies to monomer of lactose repressor protein.](#)

Sams CF, Hemelt VB, Pinkerton FD, Schroepfer GJ Jr, Matthews KS.

The Journal of Biological Chemistry 1985 Jan; 260(2):1185.

Application: ELISA, WB-Re, Purified proteins