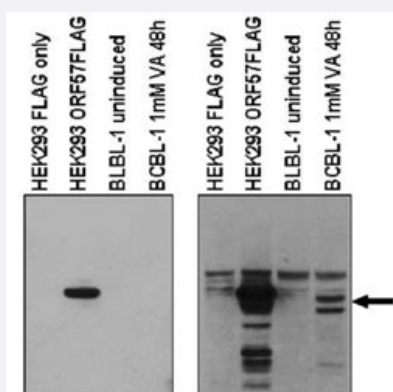


# HHV8gp59 polyclonal antibody

Catalog # PAB10254      Size 100 ug

## Applications



### Western Blot (Transfected lysate)

Western blot using HHV8gp59 polyclonal antibody (Cat # PAB10254) to detect HHV8gp59 in HEK293 cells transfected with HHV8gp59 expression vector and HHV8gp59 truncations, or in HHV8gp59 infected B-cell line (BCBL-1) treated with or without valproic acid to induce viral replication (arrow).

The membrane was probed with the primary antibody diluted 1 : 7,500 (left) and 1:1,000 (right).

Personal Communication, V. Majerciak, M.Zheng, CCR-NC , Bethesda, MD.

## Specification

<b>Product Description</b>	Rabbit polyclonal antibody raised against synthetic peptide of HHV8gp59.
<b>Immunogen</b>	A synthetic peptide corresponding to C-terminus of human herpesvirus 8 type M HHV8gp59.
<b>Host</b>	Rabbit
<b>Reactivity</b>	Viruses
<b>Specificity</b>	A BLAST analysis was used to suggest cross-reactivity with ORF57 protein from human herpesvirus 8 types P and M sources based on 94% homology with the immunizing sequence.
<b>Form</b>	Liquid
<b>Quality Control Testing</b>	Antibody Reactive Against Synthetic Peptide.
<b>Recommend Usage</b>	ELISA (1:100000-1:170000) Western Blot (1:5000-1:8000) The optimal working dilution should be determined by the end user.
<b>Storage Buffer</b>	In 20 mM KH <sub>2</sub> PO <sub>4</sub> , 150 mM NaCl, pH 7.2 (0.01% sodium azide)

**Storage Instruction**

Store at 4°C. For long term storage store at -20°C.  
Aliquot to avoid repeated freezing and thawing.

**Note**

This product contains sodium azide: a POISONOUS AND HAZARDOUS SUBSTANCE which should be handled by trained staff only.

## Applications

- Western Blot (Transfected lysate)

Western blot using HHV8gp59 polyclonal antibody (Cat # PAB10254) to detect HHV8gp59 in HEK293 cells transfected with HHV8gp59 expression vector and HHV8gp59 truncations, or in HHV8gp59 infected B-cell line (BCBL-1) treated with or without valproic acid to induce viral replication (arrow).

The membrane was probed with the primary antibody diluted 1 : 7,500 (left) and 1:1,000 (right).

Personal Communication, V. Majerciak, M.Zheng, CCR-NC , Bethesda, MD.

- Immunohistochemistry

- Enzyme-linked Immunoabsorbent Assay

## Gene Info — HHV8gp59

**Entrez GeneID**[935076](#)**Protein Accession#**[AAC57139](#)**Gene Name**

HHV8gp59

**Gene Alias**

-

**Gene Description**

similar to immediate early protein; similar to EBV BMLF1

**Gene Ontology**[Hyperlink](#)**Other Designations**

ORF 57

## Publication Reference

- [Targeted disruption of Kaposi's sarcoma-associated herpesvirus ORF57 in the viral genome is detrimental for the expression of ORF59, K8alpha, and K8.1 and the production of infectious virus.](#)

Majerciak V, Pripuzova N, McCoy JP, Gao SJ, Zheng ZM.

Journal of Virology 2007 Feb; 81(3):1062.

Application: IF, Human, Bac36 cells

- [Structural and functional analyses of Kaposi sarcoma-associated herpesvirus ORF57 nuclear localization signals in living cells.](#)

Majerciak V, Yamanegi K, Nie SH, Zheng ZM.

The Journal of Biological Chemistry 2006 Sep; 281(38):28365.

- [The evolutionarily conserved Kaposi's sarcoma-associated herpesvirus ORF57 protein interacts with REF protein and acts as an RNA export factor.](#)

Malik P, Blackbourn DJ, Clements JB.

The Journal of Biological Chemistry 2004 Jul; 279(31):33001.

Application: IP, WB, Human, BCBL-1 cells