

Bioactive

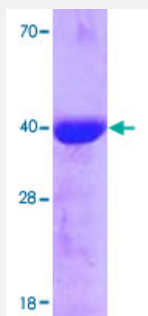
Full-Length

PPIE (Human) Recombinant Protein

Catalog # P3470

Size 100 ug

Applications



Specification

Product Description

Human PPIE (NP_006103, 1 a.a. - 301 a.a.) full-length recombinant protein with His tag expressed in *Escherichia coli*.

Sequence

MRGSHHHHHHGMASMTGGQQMGRDLYDDDDKDRWGSMATTKRVLYVGGLAEEVDDKVLHAA
FIPFGDITDIQIPLDYETEKHRGFAFVEFELAEDAAAAIDNMNESELFGRITRVNLAKPMRIKEGSSR
PVWSDDDWLKKFSGKTLEENKEEEGSEPPKAETQEGEPIAKKARSNPQVYMDIKIGNKPAGRIQ
MLLRSDVVPMTAENFRCLCTHEKGFGFKGSSFHRIIPQFMCQGGDFTNHNGTGGKSIYGKKFDDE
NFLKHTGPGLLSMANS GPNTNGSQFFLTCDKTDWLDGKHVVFGEVTEGLDVLRQIEAQGSKDG
KPKQKVIIADCGEYV

Host

Escherichia coli

Theoretical MW (kDa)

37.5

Form

Liquid

Preparation Method

Escherichia coli expression system

Purification

Conventional Chromatography

Concentration

1 mg/mL

Purity

> 95% by SDS-PAGE

Activity	Specific activity is > 210 nmoles/min/ug, and is defined as the amount of enzyme that cleaves 1umol e of suc-AAFP-pNA per minute at 1°C in Tris-HCl pH 8.0 using chymotrypsin.
Quality Control Testing	Loading 3 ug protein in 15% SDS-PAGE
Storage Buffer	In 20 mM Tris, pH 8.0.
Storage Instruction	Store at 2°C to 8°C for 1 week. For long term storage, aliquot and store at -20°C to -80°C. Aliquot to avoid repeated freezing and thawing.

Applications

- Functional Study
- SDS-PAGE

Gene Info — PPIE

Entrez GeneID	10450
Protein Accession#	NP_006103
Gene Name	PPIE
Gene Alias	CYP-33, MGC111222, MGC3736
Gene Description	peptidylprolyl isomerase E (cyclophilin E)
Omim ID	602435
Gene Ontology	Hyperlink
Gene Summary	The protein encoded by this gene is a member of the peptidyl-prolyl cis-trans isomerase (PPIase) family. PPIases catalyze the cis-trans isomerization of proline imidic peptide bonds in oligopeptides and accelerate the folding of proteins. This protein contains a highly conserved cyclophilin (CYP) domain as well as an RNA-binding domain. It was shown to possess PPIase and protein folding activities and also exhibit RNA-binding activity. Three alternatively spliced transcript variants encoding distinct isoforms have been observed. [provided by RefSeq]
Other Designations	OTTHUMP00000010837 OTTHUMP00000010838 PPIase E cyclophilin 33 cyclophilin E peptidyl-prolyl cis-trans isomerase E peptidylprolyl isomerase E peptidylprolyl isomerase E, isoform 1 rotamase E

Disease

- [Obesity](#)