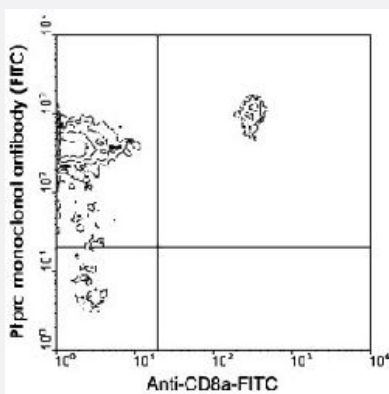


# Ptpcr exon B-dependent form monoclonal antibody, clone C363.16A (SPRD)

Catalog # MAB5734      Size 100 ug

## Applications



### Flow Cytometry

BALB/c splenocytes were double-stained with Ptpcr exon B-dependent form monoclonal antibody, clone C363.16A (PE) and rat anti-mouse CD8a-FITC. Small lymphocytes were then gated and analyzed on a FACScan™ flow cytometer (BDIS, San Jose, CA).

## Specification

<b>Product Description</b>	Rat monoclonal antibody raised against Ptpcr exon B-dependent form.
<b>Immunogen</b>	Cloned mouse Th2 cell lines.
<b>Host</b>	Rat
<b>Reactivity</b>	Mouse
<b>Specificity</b>	An exon B-dependent epitope of CD45 glycoprotein.
<b>Form</b>	Liquid
<b>Conjugation</b>	SPRD
<b>Isotype</b>	IgG2a, kappa
<b>Recommend Usage</b>	Flow Cytometry (0.2 ug/10 <sup>6</sup> cells) The optimal working dilution should be determined by the end user.

Storage Buffer	In PBS (0.09% sodium azide)
Storage Instruction	Store in the dark at 4°C. Do not freeze. Avoid prolonged exposure to light. Aliquot to avoid repeated freezing and thawing.
Note	This product contains sodium azide: a POISONOUS AND HAZARDOUS SUBSTANCE which should be handled by trained staff only.

## Applications

- Immunoprecipitation
- Flow Cytometry

BALB/c splenocytes were double-stained with Ptpcr exon B-dependent form monoclonal antibody, clone C363.16A (PE) and rat anti-mouse CD8a-FITC. Small lymphocytes were then gated and analyzed on a FACScan™ flow cytometer (BDIS, San Jose, CA).

## Gene Info — Ptpcr

Entrez GeneID	<a href="#">19264</a>
Gene Name	Ptpcr
Gene Alias	B220, CD45R, Cd45, Ly-5, Lyl-4, T200, loc
Gene Description	protein tyrosine phosphatase, receptor type, C
Gene Ontology	<a href="#">Hyperlink</a>
Gene Summary	receptor type
Other Designations	lymphocyte common antigen

## Publication Reference

- [Expression of variable exon A-, B-, and C-specific CD45 determinants on peripheral and thymic T cell populations.](#)

Hathcock KS, Laszlo G, Dickler HB, Sharrow SO, Johnson P, Trowbridge IS, Hodes RJ.  
Journal of Immunology 1992 Jan; 148(1):19.

- [A monoclonal antibody to murine CD45R distinguishes CD4 T cell populations that produce different cytokines.](#)

Bottomly K, Luqman M, Greenbaum L, Carding S, West J, Pasqualini T, Murphy DB.

European Journal of Immunology 1989 Apr; 19(4):617.

- [Identification of the alternatively spliced exons of murine CD45 \(T200\) required for reactivity with B220 and other T200-restricted antibodies.](#)

Johnson P, Greenbaum L, Bottomly K, Trowbridge IS.

The Journal of Experimental Medicine 1989 Mar; 169(3):1179.

Application: Flow Cyt, Mouse, Ψ2 cells