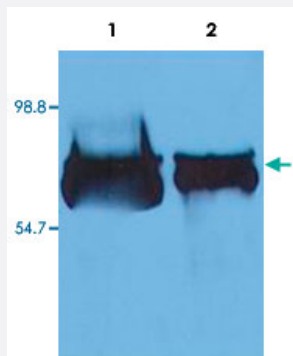


ALB monoclonal antibody, clone AL-01

Catalog # MAB3598 Size 100 ug

Applications



Western Blot (Tissue lysate)

Western Blotting analysis (reducing conditions) of human serum albumin using ALB monoclonal antibody, clone AL-01 (Cat # MAB3598).

Lane 1 : Human blood plasma.

Lane 2 : Human blood serum.

Specification

Product Description	Mouse monoclonal antibody raised against native ALB.
Immunogen	Native purified human ALB.
Host	Mouse
Theoretical MW (kDa)	65-67
Reactivity	Human
Specificity	This antibody reacts only with human serum albumin, a 65-67 KDa monomeric protein in human blood plasma; it is produced in liver. No cross-reactivity was observed with other serum proteins.
Form	Liquid
Concentration	1 mg/mL
Isotype	IgG1
Recommend Usage	Immunohistochemistry (Formalin/PFA-fixed paraffin-embedded sections) (5 ug/mL) The optimal working dilution should be determined by the end user.

Storage Buffer	In PBS, pH 7.4 (0.09% sodium azide)
Storage Instruction	Store at 4°C. Do not freeze. Aliquot to avoid repeated freezing and thawing.
Note	This product contains sodium azide: a POISONOUS AND HAZARDOUS SUBSTANCE which should be handled by trained staff only.

Applications

- Western Blot (Tissue lysate)

Western Blotting analysis (reducing conditions) of human serum albumin using ALB monoclonal antibody, clone AL-01 (Cat # MAB3598).

Lane 1 : Human blood plasma.

Lane 2 : Human blood serum.

- Immunohistochemistry (Formalin/PFA-fixed paraffin-embedded sections)

- Enzyme-linked Immunoabsorbent Assay

- Radioimmunoassay

Gene Info — ALB

Entrez GeneID	213
Gene Name	ALB
Gene Alias	DKFZp779N1935, PRO0883, PRO0903, PRO1341
Gene Description	albumin
Omim ID	103600 194470
Gene Ontology	Hyperlink
Gene Summary	Albumin is a soluble, monomeric protein which comprises about one-half of the blood serum protein. Albumin functions primarily as a carrier protein for steroids, fatty acids, and thyroid hormones and plays a role in stabilizing extracellular fluid volume. Albumin is a globular unglycosylated serum protein of molecular weight 65,000. Albumin is synthesized in the liver as preproalbumin which has an N-terminal peptide that is removed before the nascent protein is released from the rough endoplasmic reticulum. The product, proalbumin, is in turn cleaved in the Golgi vesicles to produce the secreted albumin. [provided by RefSeq]
Other Designations	cell growth inhibiting protein 42 growth-inhibiting protein 20 serum albumin

Publication Reference

- [Neuroprotective effects of a hemoglobin-based oxygen carrier \(stroma-free hemoglobin nanoparticle\) on ischemia reperfusion injury.](#)

Ryota Tatzawa, Takeo Abumiya, Yasuhiro Ito, Masayuki Gekka, Wataru Okamoto, Kohta Ishii, Natsumi Kohyama, Teruyuki Komatsu, Miki Fujimura.

Brain Research 2023 Sep; 1821:148592.

Application: IHC, Rat, Rat cerebral

Disease

- [Alzheimer disease](#)
- [Diabetes Mellitus](#)
- [Hepatitis](#)