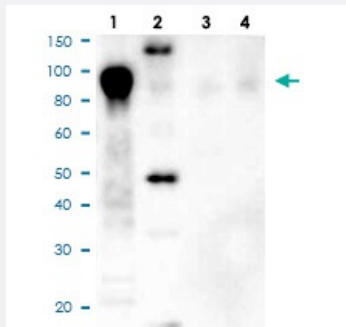


# His tag monoclonal antibody, clone 33D10.D2.G8 (HRP)

Catalog # MAB23676 Size 100 ug

## Applications



### Western Blot

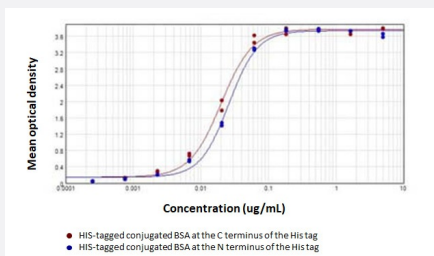
Western blot analysis with His tag monoclonal antibody, clone 33D10.D2.G8 (HRP) (Cat # MAB23676).

Lane 1: 100 ng purified histidine-tagged recombinant protein

Lane 2: 200 ng E. coli cell lysate containing histidine-tagged expression construct

Lane 3: 100 ng purified GST-tagged recombinant protein

Lane 4: 100 ng purified FLAG-tagged recombinant protein



### Enzyme-linked Immunoabsorbent Assay

ELISA analysis of HIS-tagged conjugated BSA at the N or C terminus of the His tag with His tag monoclonal antibody, clone 33D10.D2.G8 (HRP) (Cat # MAB23676).



### Enzyme-linked Immunoabsorbent Assay

ELISA analysis with His tag monoclonal antibody, clone 33D10.D2.G8 (HRP) (Cat # MAB23676).

Antigen: HIS-tagged purified protein and E. coli cell lysates expressing His-tagged construct, GST- and RON-tagged purified proteins.

## Specification

### Product Description

Mouse monoclonal antibody raised against synthetic peptides of His tag.  
The antibody is conjugated with horseradish peroxidase (HRP).

<b>Immunogen</b>	A synthetic peptide (conjugated with KLH) corresponding to His tag.
<b>Sequence</b>	HHHHHH
<b>Host</b>	Mouse
<b>Specificity</b>	The antibody recognizes the His-tag (His-His-His-His-His-His) fused to either the amino- or carboxy-termini of targeted proteins in transfected or transformed cells.
<b>Form</b>	Lyophilized
<b>Conjugation</b>	HRP
<b>Purification</b>	Protein A affinity purification
<b>Concentration</b>	1.0 mg/mL by UV abso
<b>Isotype</b>	IgG1
<b>Recommend Usage</b>	ELISA (1:10,000) Immunohistochemistry (1:500 - 1:2,500) Western Blot (1:1,000 - 1:5,000) The optimal working dilution should be determined by the end user.
<b>Storage Buffer</b>	Lyophilized from 0.02 M potassium phosphate, 0.15 M sodium chloride, pH 7.2 (with 10 mg/mL BSA [immunoglobulin and protease free) and 0.01% (w/v) gentamicin sulfate).
<b>Storage Instruction</b>	Store vial at 4°C prior to restoration. After reconstitution with 100 uL deionized water (or equivalent), aliquot contents and freeze at -20°C or below for extended storage. Aliquot to avoid repeated freezing and thawing. Centrifuge product if not completely clear after standing at room temperature. This product is stable for several weeks at 4°C as an undiluted liquid. Dilute only prior to immediate use.

## Applications

- Western Blot

Western blot analysis with His tag monoclonal antibody, clone 33D10.D2.G8 (HRP) (Cat # MAB23676).

Lane 1: 100 ng purified histidine-tagged recombinant protein

Lane 2: 200 ng E. coli cell lysate containing histidine-tagged expression construct

Lane 3: 100 ng purified GST-tagged recombinant protein

Lane 4: 100 ng purified FLAG-tagged recombinant protein

- Immunohistochemistry

- Enzyme-linked Immunoabsorbent Assay

ELISA analysis of HIS-tagged conjugated BSA at the N or C terminus of the His tag with His tag monoclonal antibody, clone 33D10.D2.G8 (HRP) (Cat # MAB23676).

- Enzyme-linked Immunoabsorbent Assay

ELISA analysis with His tag monoclonal antibody, clone 33D10.D2.G8 (HRP) (Cat # MAB23676).

Antigen: HIS-tagged purified protein and E. coli cell lysates expressing His-tagged construct, GST- and RON-tagged purified proteins.