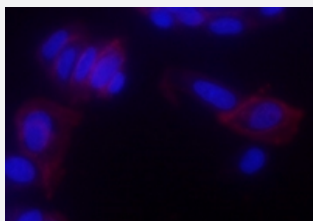


# CD276 monoclonal antibody (Alexa 647), clone 7G6

Catalog # MAB23671-M02

Size 50 ug

## Applications

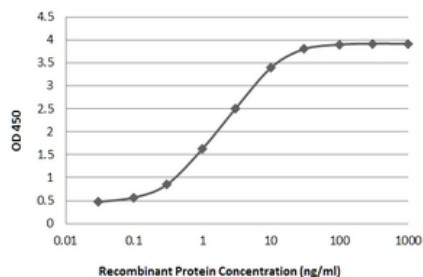


### Immunofluorescence

Immunofluorescence staining performed on CTCs from the patient recovered by SuperSlide™. CD276 was detected via red signal (Alexa 647).

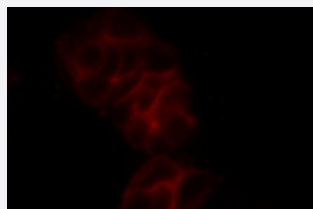
### Sandwich ELISA

Sandwich ELISA performed with CD276 recombinant protein and CD276 monoclonal antibody (Alexa 647)



### Immunofluorescence

Immunofluorescence staining performed on MCF-7 cells using CD276 monoclonal antibody (Alexa 647) (10 ug/mL).



## Specification

### Product Description

Alexa 647 conjugated mouse CD276 monoclonal antibody.

### Amenable Platform

[LiquidCell™ negative enrichment cell isolation](#)

Immunogen	Human recombinant CD276
Host	Mouse
Form	Liquid
Conjugation	Alexa 647
Concentration	0.5 mg/mL
Isotype	IgG1, kappa
Available Test	16 assays
Quality Control Testing	Results Sandwich ELISA Sandwich ELISA performed with CD276 recombinant protein and CD276 monoclonal antibody (Alexa 647)  Immunofluorescence Immunofluorescence staining performed on MCF-7 cells using CD276 monoclonal antibody (Alexa 647) (10 ug/mL).
Recommend Usage	Immunofluorescence (10 ug/mL) LiquidCell™ SuperSlide™ (6 uL per slide)
Regulatory Status	Research Use Only
Storage Buffer	In 1x PBS, pH 7.4
Storage Instruction	Store at 2-8°C. Do not freeze.
Instrument Compatibility	Ventana™ BenchMark Stainer

## Applications

- Immunofluorescence

Immunofluorescence staining performed on CTCs from the patient recovered by SuperSlide™. CD276 was detected via red signal (Alexa 647).

## Gene Info — CD276

Entrez GeneID	<a href="#">80381</a>
Gene Name	CD276
Gene Alias	B7-H3, B7H3

Gene Description	CD276 molecule
Omim ID	<a href="#">605715</a>
Gene Ontology	<a href="#">Hyperlink</a>
Gene Summary	Costimulatory B7 molecules (e.g., B7-1, or CD80; MIM 112203) signal through CD28 (MIM 186760) family molecules such as CD28, CTLA4 (MIM 123890), and ICOS (MIM 604558).[supplied by OMIM]
Other Designations	B7 homolog 3 CD276 antigen

## Pathway

- [Cell adhesion molecules \(CAMs\)](#)