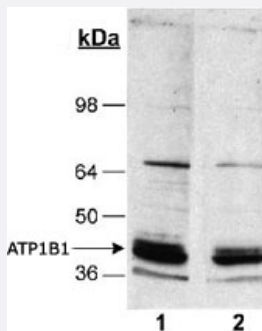


ATP1B1 monoclonal antibody, clone 464.8

Catalog # MAB2323 Size 100 uL

Applications



Western Blot (Tissue lysate)

Detection of ATP1B1 in rat kidney homogenates (20 ug) using ATP1B1 monoclonal antibody, clone 464.8 (also known as 8A) (Cat # MAB2323).

Lane 1, 1 : 2,500 primary antibody.

Lane 2, 1 : 5,000 primary antibody.

Specification

Product Description	Mouse monoclonal antibody raised against native ATP1B1.
Immunogen	Native purified rabbit ATP1B1.
Host	Mouse
Reactivity	Bovine, Dog, Human, Pig, Rabbit, Rat
Specificity	This antibody is specific to Na, K-ATPase beta 1 subunit.
Form	Liquid
Isotype	IgG2a, kappa
Recommend Usage	Western Blot (1:2500-1:10000) The optimal working dilution should be determined by the end user.
Storage Buffer	In buffer containing 0.09% sodium azide
Storage Instruction	Store at -20°C or -80°C. Aliquot to avoid repeated freezing and thawing.

Note

This product contains sodium azide: a POISONOUS AND HAZARDOUS SUBSTANCE which should be handled by trained staff only.

Applications

- Western Blot (Tissue lysate)

Detection of ATP1B1 in rat kidney homogenates (20 ug) using ATP1B1 monoclonal antibody, clone 464.8 (also known as 8A) (Cat # MAB2323).

Lane 1, 1 : 2,500 primary antibody.

Lane 2, 1 : 5,000 primary antibody.

Gene Info — ATP1B1

Entrez GeneID [100008749](#)

Protein Accession# [Q9TT37](#)

Gene Name ATP1B1

Gene Alias -

Gene Description ATPase, Na⁺/K⁺ transporting, beta 1 polypeptide

Gene Ontology [Hyperlink](#)

Gene Summary -

Other Designations Na⁺,K⁺-ATPase beta 1 subunit|Na⁺/K⁺ -ATPase beta 1 subunit

Publication Reference

- [Distinct endocytic recycling of myelin proteins promotes oligodendroglial membrane remodeling.](#)

Winterstein C, Trotter J, Kramer-Albers EM.

Journal of Cell Science 2008 Mar; 121(Pt 6):834.

Application: WB-Ce, Mouse, Mouse oligodendrocytes

- [The C-terminal flavin domain of gp91phox bound to plasma membranes of granulocyte-like X-CGD PLB-985 cells is sufficient to anchor cytosolic oxidase components and support NADPH oxidase-associated diaphorase activity independent of cytosolic phospholipase A2 regulation.](#)

Pessach I, Shmelzer Z, Leto TL, Dinauer MC, Levy R.

Journal of Leukocyte Biology 2006 Sep; 80(3):630.

Application: WB-Ce, Human, X-CGD PLB 91CT cells

- [Recombinant addition of N-glycosylation sites to the basolateral Na,K-ATPase beta1 subunit results in its clustering in caveolae and apical sorting in HGT-1 cells.](#)

Vagin O, Turdikulova S, Sachs G.

The Journal of Biological Chemistry 2005 Dec; 280(52):43159.

Application: WB, Dog, Human, Pig, HGT-1, LLC-PK1, MDCK cells

- [Use of the H,K-ATPase beta subunit to identify multiple sorting pathways for plasma membrane delivery in polarized cells.](#)

Vagin O, Turdikulova S, Yakubov I, Sachs G.

The Journal of Biological Chemistry 2005 Apr; 280(15):14741.

Application: WB-Tr, Dog, Pig, MDCK, LLC-PK1 cells