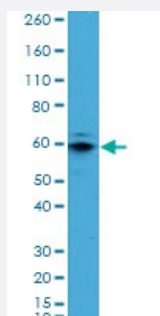


RecomAb™

RPS6KB1 monoclonal antibody, clone RM438

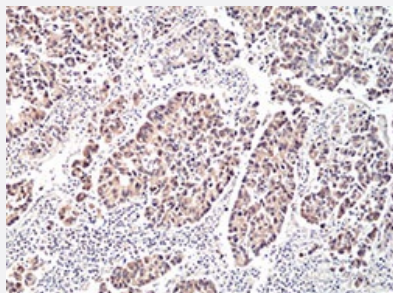
Catalog # MAB23223 Size 100 uL

Applications



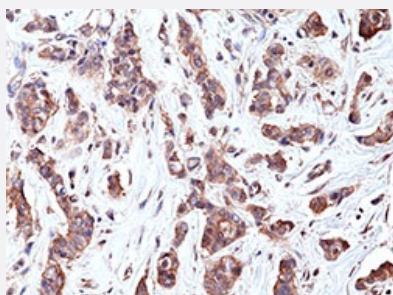
Western Blot (Cell lysate)

Western blot analysis of MCF-7 cell lysates with RPS6KB1 monoclonal antibody, clone RM438 (Cat # MAB23223) at a 1:2000 dilution.



Immunohistochemistry (Formalin/PFA-fixed paraffin-embedded sections)

Immunohistochemical staining (Formalin-fixed paraffin-embedded sections) of human brain carcinoma with RPS6KB1 monoclonal antibody, clone RM438 (Cat # MAB23223) at a 1:100 dilution.



Immunohistochemistry (Formalin/PFA-fixed paraffin-embedded sections)

Immunohistochemical staining (Formalin-fixed paraffin-embedded sections) of human breast cancer with RPS6KB1 monoclonal antibody, clone RM438 (Cat # MAB23223) at a 1:400 dilution.

Specification

Product Description

Rabbit recombinant monoclonal antibody raised against human RPS6KB1.

Antibody Species	Rabbit
Immunogen	Original antibody is raised against a synthetic peptide corresponding to N-terminus of human RPS6 KB1.
Reactivity	Human
Specificity	This antibody reacts to human RPS6KB1.
Form	Liquid
Purification	Protein A purification
Isotype	IgG
Recommend Usage	Immunohistochemistry (1:100-1:400) Western Blot (1:1000-1:2000) The optimal working dilution should be determined by the end user.
Storage Buffer	In PBS (50% glycerol, 1% BSA, 0.09% sodium azide)
Storage Instruction	Store at -20°C. Aliquot to avoid repeated freezing and thawing.
Note	This product contains sodium azide: a POISONOUS AND HAZARDOUS SUBSTANCE which should be handled by trained staff only.

Applications

- Western Blot (Cell lysate)

Western blot analysis of MCF-7 cell lysates with RPS6KB1 monoclonal antibody, clone RM438 (Cat # MAB23223) at a 1:2000 dilution.

- Immunohistochemistry (Formalin/PFA-fixed paraffin-embedded sections)

Immunohistochemical staining (Formalin-fixed paraffin-embedded sections) of human brain carcinoma with RPS6KB1 monoclonal antibody, clone RM438 (Cat # MAB23223) at a 1:100 dilution.

- Immunohistochemistry (Formalin/PFA-fixed paraffin-embedded sections)

Immunohistochemical staining (Formalin-fixed paraffin-embedded sections) of human breast cancer with RPS6KB1 monoclonal antibody, clone RM438 (Cat # MAB23223) at a 1:400 dilution.

Gene Info — RPS6KB1

Entrez GeneID [6198](#)

Gene Name	RPS6KB1
Gene Alias	PS6K, S6K, S6K1, STK14A, p70(S6K)-alpha, p70-S6K, p70-alpha
Gene Description	ribosomal protein S6 kinase, 70kDa, polypeptide 1
Omim ID	608938
Gene Ontology	Hyperlink
Gene Summary	<p>This gene encodes a member of the RSK (ribosomal S6 kinase) family of serine/threonine kinase s. This kinase contains 2 non-identical kinase catalytic domains and phosphorylates several residues of the S6 ribosomal protein. The kinase activity of this protein leads to an increase in protein synthesis and cell proliferation. Amplification of the region of DNA encoding this gene and overexpression of this kinase are seen in some breast cancer cell lines. Alternate translational start sites have been described and alternate transcriptional splice variants have been observed but have not been thoroughly characterized. [provided by RefSeq]</p>
Other Designations	p70 S6 kinase, alpha 1 p70 S6 kinase, alpha 2 ribosomal protein S6 kinase, 70kD, polypeptide 1 serine/threonine kinase 14 alpha

Pathway

- [Acute myeloid leukemia](#)
- [ErbB signaling pathway](#)
- [Fc gamma R-mediated phagocytosis](#)
- [Insulin signaling pathway](#)
- [mTOR signaling pathway](#)
- [TGF-beta signaling pathway](#)

Disease

- [Cardiovascular Diseases](#)
- [Diabetes Mellitus](#)
- [Edema](#)
- [Head and Neck Neoplasms](#)
- [Neoplasm Recurrence](#)

- [Neoplasms](#)