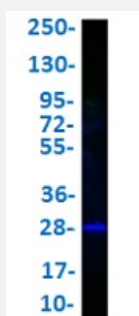


GFP monoclonal antibody, clone 9F9.F9 (FITC)

Catalog # MAB23143 Size 1 mg

Applications



Western Blot (Recombinant protein)

Western Blot analysis of GFP (50 ng) with GFP monoclonal antibody, clone 9F9.F9 (FITC) (Cat # MAB23143).

Specification

Product Description	Mouse monoclonal antibody raised against full length recombinant GFP. The antibody is conjugated with Fluorescein (FITC).
Immunogen	Recombinant fusion protein corresponding to full length amino acid sequence (246 amino acids) derived from the jellyfish Aequorea victoria GFP.
Host	Mouse
Specificity	This antibody reactivity is observed against recombinant Green Fluorescent Protein. No reaction is seen against RFP.
Form	Lyophilized
Conjugation	FITC
Purification	This antibody was prepared from tissue culture supernatant by protein A affinity chromatography.
Isotype	IgG1, kappa
Recommend Usage	ELISA (1:20000-1:40000) Immunofluorescence (1:500-1:2500) Western Blot (1:10000-1:25000) The optimal working dilution should be determined by the end user.

Storage Buffer

Lyophilized from 20 mM potassium phosphate, 150 mM NaCl, pH 7.2 (10 mg/mL BSA, 0.01% (w/v) sodium azide).

Storage Instruction

Store vial at 4°C prior to restoration.
After reconstitution with 1.0 mL deionized water (or equivalent), aliquot contents and freeze at -20°C or below for extended storage.
Aliquot to avoid repeated freezing and thawing.
Centrifuge product if not completely clear after standing at room temperature. This product is stable for several weeks at 4°C as an undiluted liquid. Dilute only prior to immediate use.

Note

This product contains sodium azide: a POISONOUS AND HAZARDOUS SUBSTANCE which should be handled by trained staff only.

Applications

- Western Blot (Recombinant protein)

Western Blot analysis of GFP (50 ng) with GFP monoclonal antibody, clone 9F9.F9 (FITC) (Cat # MAB23143).

- Immunofluorescence

- Enzyme-linked Immunoabsorbent Assay