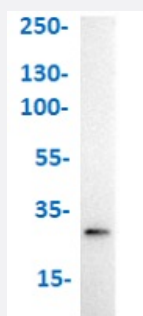


# GFP monoclonal antibody, clone 9F9.F9 (Alkaline Phosphatase)

Catalog # MAB23141

Size 1 mg

## Applications



### Western Blot (Recombinant protein)

Western Blot analysis of GFP (100 ng) with GFP monoclonal antibody, clone 9F9.F9 (Alkaline Phosphatase) (Cat # MAB23141).

## Specification

<b>Product Description</b>	Mouse monoclonal antibody raised against full length recombinant GFP. The antibody is conjugated with Alkaline Phosphatase (Calf Intestine).
<b>Immunogen</b>	Recombinant fusion protein corresponding to full length amino acid sequence (246 amino acids) derived from the jellyfish Aequorea victoria GFP.
<b>Host</b>	Mouse
<b>Specificity</b>	This antibody reactivity is observed against recombinant Green Fluorescent Protein. No reaction is seen against RFP.
<b>Form</b>	Liquid
<b>Conjugation</b>	Alkaline Phosphatase
<b>Purification</b>	This antibody was prepared from tissue culture supernatant by protein A affinity chromatography.
<b>Isotype</b>	IgG1, kappa
<b>Recommend Usage</b>	ELISA (1:2000-1:12000) Immunohistochemistry (1:200-1:1000) Western Blot (1:500-1:2500) The optimal working dilution should be determined by the end user.

<b>Storage Buffer</b>	In 50 mM Tris-Cl, 150 mM NaCl, 1 mM MgCl <sub>2</sub> , 0.1 mM ZnCl <sub>2</sub> , pH 8.0 (50% (v/v) glycerol, 10 mg/mL BSA, 0.01% (w/v) sodium azide)
<b>Storage Instruction</b>	Store at 4°C before opening. Do not freeze. This product is stable at 4°C as an undiluted liquid. Dilute only prior to immediate use. Freezing alkaline phosphatase conjugates will result in a substantial loss of enzymatic activity.
<b>Note</b>	This product contains sodium azide: a POISONOUS AND HAZARDOUS SUBSTANCE which should be handled by trained staff only.

## Applications

- Western Blot (Recombinant protein)

Western Blot analysis of GFP (100 ng) with GFP monoclonal antibody, clone 9F9.F9 (Alkaline Phosphatase) (Cat # MAB23141).

- Immunohistochemistry

- Enzyme-linked Immunoabsorbent Assay