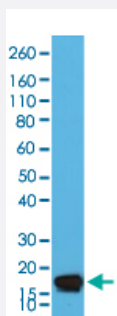


RecomAb™

STMN1 monoclonal antibody, clone RM350

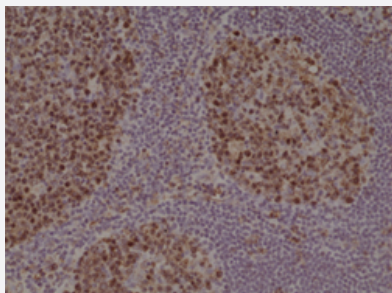
Catalog # MAB21988 Size 100 uL

Applications



Western Blot (Cell lysate)

Western Blot (Cell lysate) analysis of HeLa cell lysate.



Immunohistochemistry (Formalin/PFA-fixed paraffin-embedded sections)

Immunohistochemical staining of human tonsil.

Specification

| | |
|----------------------------|---|
| Product Description | Rabbit recombinant monoclonal antibody raised against human STMN1. |
| Antibody Species | Rabbit |
| Immunogen | Original antibody is raised against a synthetic peptide corresponding to C-terminus of human STMN1. |
| Reactivity | Human |
| Specificity | This antibody reacts to human Stathmin. It may also react to mouse or rat Stathmin, as predicted by immunogen homology. |

| | |
|---------------------|---|
| Form | Liquid |
| Purification | Protein A purification |
| Isotype | IgG |
| Recommend Usage | Immunohistochemistry (Formalin/PFA-fixed paraffin-embedded sections) (1:500-1000) Western Blot (1:2000-5000) The optimal working dilution should be determined by the end user. |
| Storage Buffer | In PBS (50% glycerol, 1% BSA, 0.09% sodium azide) |
| Storage Instruction | Store at -20°C. Aliquot to avoid repeated freezing and thawing. |
| Note | This product contains sodium azide: a POISONOUS AND HAZARDOUS SUBSTANCE which should be handled by trained staff only. |

Applications

- Western Blot (Cell lysate)
Western Blot (Cell lysate) analysis of HeLa cell lysate.
- Immunohistochemistry (Formalin/PFA-fixed paraffin-embedded sections)
Immunohistochemical staining of human tonsil.

Gene Info — STMN1

| | |
|------------------|--|
| Entrez GeneID | 3925 |
| Gene Name | STMN1 |
| Gene Alias | LAP18, Lag, OP18, PP17, PP19, PR22, SMN |
| Gene Description | stathmin 1/oncoprotein 18 |
| Omim ID | 151442 |
| Gene Ontology | Hyperlink |
| Gene Summary | This gene belongs to the stathmin family of genes. It encodes a ubiquitous cytosolic phosphoprotein proposed to function as an intracellular relay integrating regulatory signals of the cellular environment. The encoded protein is involved in the regulation of the microtubule filament system by destabilizing microtubules. It prevents assembly and promotes disassembly of microtubules. Multiple transcript variants encoding different isoforms have been found for this gene. [provided by RefSeq] |

Other Designations

OTTHUMP00000008527|OTTHUMP00000008528|OTTHUMP00000008530|leukemia-associated phosphoprotein p18|metablastin|oncoprotein 18|phosphoprotein 19|prosolin|stathmin 1

Pathway

- [MAPK signaling pathway](#)

Disease

- [Anorexia Nervosa](#)
- [Bulimia](#)
- [Genetic Predisposition to Disease](#)
- [Startle Reaction](#)