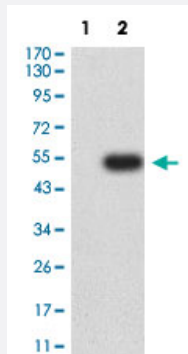


# CHD4 monoclonal antibody, clone 3D3E9

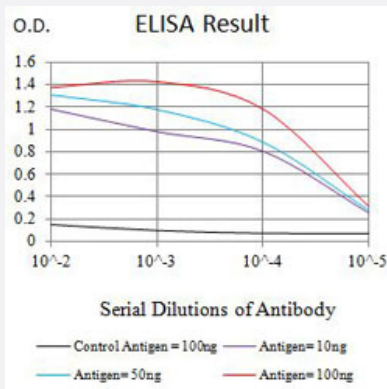
Catalog # MAB21499      Size 100 ug

## Applications



### Western Blot (Transfected lysate)

Western Blot analysis of Lane 1: HEK293 and Lane 2: CHD4-hlgGfC transfected HEK293 cell lysates with CHD4 monoclonal antibody, clone 3D3E9 (Cat # MAB21499).



### Enzyme-linked Immunoabsorbent Assay

ELISA analysis with CHD4 monoclonal antibody, clone 3D3E9 (Cat # MAB21499).

## Specification

Product Description	Mouse monoclonal antibody raised against partial recombinant human CHD4.
Immunogen	Recombinant protein corresponding to amino acids 1-194 of human CHD4.
Host	Mouse
Theoretical MW (kDa)	218
Reactivity	Human
Form	Liquid

Isotype	IgG1
Recommend Usage	ELISA (1:10000) Western Blot (1:500-1:2000) The optimal working dilution should be determined by the end user.
Storage Buffer	In PBS (0.05% sodium azide).
Storage Instruction	Store at 4°C. For long term storage store at -20°C. Aliquot to avoid repeated freezing and thawing.
Note	This product contains sodium azide: a POISONOUS AND HAZARDOUS SUBSTANCE which should be handled by trained staff only.

## Applications

- Western Blot (Transfected lysate)

Western Blot analysis of Lane 1: HEK293 and Lane 2: CHD4-hlgGfc transfected HEK293 cell lysates with CHD4 monoclonal antibody, clone 3D3E9 (Cat # MAB21499).

- Enzyme-linked Immunoabsorbent Assay

ELISA analysis with CHD4 monoclonal antibody, clone 3D3E9 (Cat # MAB21499).

## Gene Info — CHD4

Entrez GeneID	<a href="#">1108</a>
Protein Accession#	<a href="#">Q14839</a>
Gene Name	CHD4
Gene Alias	DKFZp686E06161, Mi-2b, Mi2-BETA
Gene Description	chromodomain helicase DNA binding protein 4
Omim ID	<a href="#">603277</a>
Gene Ontology	<a href="#">Hyperlink</a>
Gene Summary	The product of this gene belongs to the SNF2/RAD54 helicase family. It represents the main component of the nucleosome remodeling and deacetylase complex and plays an important role in epigenetic transcriptional repression. Patients with dermatomyositis develop antibodies against this protein. [provided by RefSeq]
Other Designations	Mi-2 autoantigen 218 kDa protein