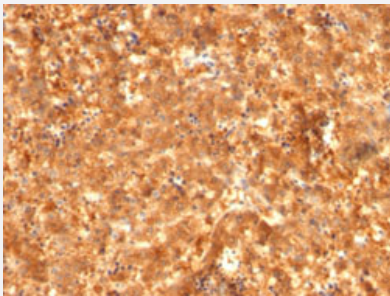


# AFP monoclonal antibody, clone C2 + C3 + MBS-12

Catalog # MAB20911      Size 100 ug

## Applications



### Immunohistochemistry (Formalin/PFA-fixed paraffin-embedded sections)

Immunohistochemical staining (Formalin-fixed paraffin-embedded sections) of human fetal liver with AFP monoclonal antibody, clone C2 + C3 + MBS-12 (Cat # MAB20911).

## Specification

<b>Product Description</b>	Mouse monoclonal antibody raised against full length recombinant human AFP.
<b>Immunogen</b>	Recombinant protein corresponding to full length human AFP.
<b>Host</b>	Mouse
<b>Theoretical MW (kDa)</b>	70
<b>Reactivity</b>	Human
<b>Form</b>	Liquid
<b>Purification</b>	Protein A/G purification
<b>Recommend Usage</b>	Flow Cytometry (0.5-1 ug/10 <sup>6</sup> cells in 0.1 mL) Immunofluorescence (0.5-1 ug/mL) Immunohistochemistry (Formalin/PFA-fixed paraffin-embedded sections) (1-2 ug/mL) The optimal working dilution should be determined by the end user.
<b>Storage Buffer</b>	In 10 mM PBS (0.05% BSA, 0.05% sodium azide).
<b>Storage Instruction</b>	Store at 2 to 8°C.

**Note**

This product contains sodium azide: a POISONOUS AND HAZARDOUS SUBSTANCE which should be handled by trained staff only.

## Applications

- Immunohistochemistry (Formalin/PFA-fixed paraffin-embedded sections)

Immunohistochemical staining (Formalin-fixed paraffin-embedded sections) of human fetal liver with AFP monoclonal antibody, clone C2 + C3 + MBS-12 (Cat # MAB20911).

- Immunofluorescence
- Flow Cytometry

## Gene Info — AFP

Entrez GeneID	<a href="#">174</a>
---------------	---------------------

Protein Accession#	<a href="#">P02771</a>
--------------------	------------------------

Gene Name	AFP
-----------	-----

Gene Alias	FETA, HPAFP
------------	-------------

Gene Description	alpha-fetoprotein
------------------	-------------------

Omim ID	<a href="#">104150</a>
---------	------------------------

Gene Ontology	<a href="#">Hyperlink</a>
---------------	---------------------------

Gene Summary	<p>This gene encodes alpha-fetoprotein, a major plasma protein produced by the yolk sac and the liver during fetal life. Alpha-fetoprotein expression in adults is often associated with hepatoma or teratoma. However, hereditary persistence of alpha-fetoprotein may also be found in individuals with no obvious pathology. The protein is thought to be the fetal counterpart of serum albumin, and the alpha-fetoprotein and albumin genes are present in tandem in the same transcriptional orientation on chromosome 4. Alpha-fetoprotein is found in monomeric as well as dimeric and trimeric forms, and binds copper, nickel, fatty acids and bilirubin. The level of alpha-fetoprotein in amniotic fluid is used to measure renal loss of protein to screen for spina bifida and anencephaly. [provided by RefSeq]</p>
--------------	--

Other Designations	OTTHUMP00000160480 alpha-1-fetoprotein alpha-fetoglobulin
--------------------	---

## Disease

- [Carcinoma](#)
- [Liver Cirrhosis](#)
- [Liver Neoplasms](#)