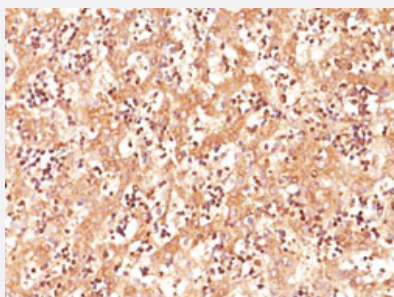


AFP monoclonal antibody, clone C3

Catalog # MAB20909 Size 100 ug

Applications



Immunohistochemistry (Formalin/PFA-fixed paraffin-embedded sections)

Immunohistochemical staining (Formalin-fixed paraffin-embedded sections) of human fetal liver with AFP monoclonal antibody, clone C3 (Cat # MAB20909).

Specification

Product Description	Mouse monoclonal antibody raised against human AFP.
Immunogen	Alpha fetoprotein (AFP) purified from serum of a hepatoma patient.
Host	Mouse
Theoretical MW (kDa)	70
Reactivity	Human
Form	Liquid
Purification	Protein A/G purification
Isotype	IgG2a, kappa
Recommend Usage	Flow Cytometry (0.5-1 ug/10 ⁶ cells in 0.1 mL) Immunofluorescence (0.5-1 ug/mL) Immunohistochemistry (Formalin/PFA-fixed paraffin-embedded sections) (1-2 ug/mL) The optimal working dilution should be determined by the end user.
Storage Buffer	In 10 mM PBS (0.05% BSA, 0.05% sodium azide).

Storage Instruction

Store at 2 to 8°C.

Note

This product contains sodium azide: a POISONOUS AND HAZARDOUS SUBSTANCE which should be handled by trained staff only.

Applications

- Immunohistochemistry (Formalin/PFA-fixed paraffin-embedded sections)

Immunohistochemical staining (Formalin-fixed paraffin-embedded sections) of human fetal liver with AFP monoclonal antibody, clone C3 (Cat # MAB20909).

- Immunofluorescence

- Flow Cytometry

Gene Info — AFP

Entrez GeneID[174](#)**Protein Accession#**[P02771](#)**Gene Name**

AFP

Gene Alias

FETA, HPAFP

Gene Description

alpha-fetoprotein

Omim ID[104150](#)**Gene Ontology**[Hyperlink](#)**Gene Summary**

This gene encodes alpha-fetoprotein, a major plasma protein produced by the yolk sac and the liver during fetal life. Alpha-fetoprotein expression in adults is often associated with hepatoma or teratoma. However, hereditary persistence of alpha-fetoprotein may also be found in individuals with no obvious pathology. The protein is thought to be the fetal counterpart of serum albumin, and the alpha-fetoprotein and albumin genes are present in tandem in the same transcriptional orientation on chromosome 4. Alpha-fetoprotein is found in monomeric as well as dimeric and trimeric forms, and binds copper, nickel, fatty acids and bilirubin. The level of alpha-fetoprotein in amniotic fluid is used to measure renal loss of protein to screen for spina bifida and anencephaly. [provided by RefSeq]

Other Designations

OTTHUMP00000160480|alpha-1-fetoprotein|alpha-fetoglobulin

Disease

- [Carcinoma](#)
- [Liver Cirrhosis](#)
- [Liver Neoplasms](#)