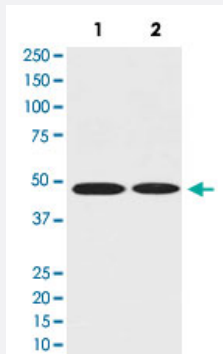


ENO1 monoclonal antibody, clone AEA-5

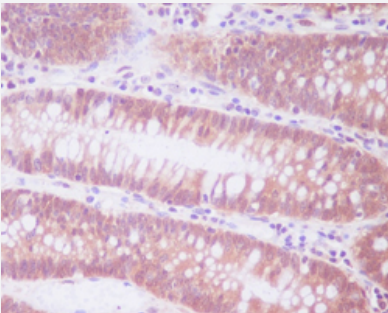
Catalog # MAB20011 Size 100 uL

Applications



Western Blot

Western Blot analysis of Lane 1: MCF-7 whole cell and Lane 2: Rat brain tissue lysates with ENO1 monoclonal antibody, clone AEA-5 (Cat # MAB20011).



Immunohistochemistry (Formalin/PFA-fixed paraffin-embedded sections)

Immunohistochemical staining (Formalin-fixed paraffin-embedded sections) of human colon with ENO1 monoclonal antibody, clone AEA-5 (Cat # MAB20011).

Specification

Product Description	Rabbit monoclonal antibody raised against synthetic peptide of human ENO1.
Immunogen	A synthetic peptide corresponding to human ENO1.
Host	Rabbit
Theoretical MW (kDa)	47.169
Reactivity	Human
Form	Liquid

Purification	Affinity purification
Isotype	IgG
Recommend Usage	Immunocytochemistry (1:50-1:200) Immunofluorescence (1:50-1:200) Immunohistochemistry (Formalin/PFA-fixed paraffin-embedded sections) Immunoprecipitation (1:50) Western Blot (1:500-1:2000) The optimal working dilution should be determined by the end user.
Storage Buffer	In PBS, 150 mM NaCl, pH 7.4 (50% glycerol, 0.02% sodium azide).
Storage Instruction	Store at -20°C for one year. After reconstitution, at 4°C for one month. It can also be aliquotted and stored frozen at -20°C for a longer time. Avoid repeated freezing and thawing.
Note	This product contains sodium azide: a POISONOUS AND HAZARDOUS SUBSTANCE which should be handled by trained staff only.

Applications

- Western Blot

Western Blot analysis of Lane 1: MCF-7 whole cell and Lane 2: Rat brain tissue lysates with ENO1 monoclonal antibody, clone AEA-5 (Cat # MAB20011).

- Immunohistochemistry (Formalin/PFA-fixed paraffin-embedded sections)

Immunohistochemical staining (Formalin-fixed paraffin-embedded sections) of human colon with ENO1 monoclonal antibody, clone AEA-5 (Cat # MAB20011).

- Immunocytochemistry

- Immunofluorescence

- Immunoprecipitation

Gene Info — ENO1

Entrez GeneID	2023
Protein Accession#	P06733
Gene Name	ENO1
Gene Alias	ENO1L1, MBP-1, MPB1, NNE, PPH

Gene Description	enolase 1, (alpha)
Omim ID	172430
Gene Ontology	Hyperlink
Gene Summary	This gene encodes one of three enolase isoenzymes found in mammals; it encodes alpha-enolase, a homodimeric soluble enzyme, and also encodes a shorter monomeric structural lens protein, tau-crystallin. The two proteins are made from the same message. The full length protein, the isoenzyme, is found in the cytoplasm. The shorter protein is produced from an alternative translation start, is localized to the nucleus, and has been found to bind to an element in the c-myc promoter. A pseudogene has been identified that is located on the other arm of the same chromosome. [provided by RefSeq]
Other Designations	2-phospho-D-glycerate hydro-lyase MYC promoter-binding protein 1 OTTHUMP00000001706 alpha enolase like 1 enolase 1 non-neural enolase phosphopyruvate hydratase tau-crystallin

Pathway

- [Biosynthesis of alkaloids derived from histidine and purine](#)
- [Biosynthesis of alkaloids derived from ornithine](#)
- [Biosynthesis of alkaloids derived from shikimate pathway](#)
- [Biosynthesis of alkaloids derived from terpenoid and polyketide](#)
- [Biosynthesis of phenylpropanoids](#)
- [Biosynthesis of plant hormones](#)
- [Biosynthesis of terpenoids and steroids](#)
- [Glycolysis / Gluconeogenesis](#)
- [Metabolic pathways](#)
- [RNA degradation](#)

Disease

- [Myocardial Infarction](#)