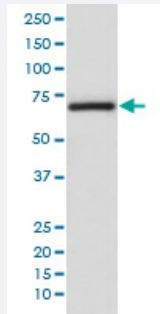


ARAF monoclonal antibody, clone IBA-1

Catalog # MAB19572 Size 100 uL

Applications



Western Blot (Cell lysate)

Western blot analysis of A375 cell lysate with ARAF monoclonal antibody.

Specification

Product Description Rabbit monoclonal antibody raised against synthetic peptide of human ARAF.

Immunogen A synthetic peptide corresponding to human ARAF.

Host Rabbit

Reactivity Human

Form Liquid

Purification Affinity purification

Isotype IgG

Recommend Usage

- Immunocytochemistry (1:50-1:200)
- Immunofluorescence (1:50-1:200)
- Immunohistochemistry (1:50-1:200)
- Flow Cytometry (1:50)
- Western Blot (1:500-1:2000)
- The optimal working dilution should be determined by the end user.

Storage Buffer In PBS, pH 7.4, 150mM NaCl, 0.02% sodium azide and 50% glycerol.

Storage Instruction

Store at -20°C for one year. After reconstitution, at 4°C for one month. It can also be aliquotted and stored frozen at -20°C for a longer time. Avoid repeated freezing and thawing.

Note

This product contains sodium azide: a POISONOUS AND HAZARDOUS SUBSTANCE which should be handled by trained staff only.

Applications

- Western Blot (Cell lysate)

Western blot analysis of A375 cell lysate with ARAF monoclonal antibody.

- Immunohistochemistry (Formalin/PFA-fixed paraffin-embedded sections)

- Immunocytochemistry

- Immunofluorescence

- Flow Cytometry

Gene Info — ARAF

Entrez GeneID[369](#)**Protein Accession#**[P10398](#)**Gene Name**

ARAF

Gene Alias

A-RAF, ARAF1, PKS2, RAFA1

Gene Description

v-raf murine sarcoma 3611 viral oncogene homolog

Omim ID[311010](#)**Gene Ontology**[Hyperlink](#)**Other Designations**

OTTHUMP00000023212|Oncogene ARAF1|Ras-binding protein DA-Raf|v-raf murine sarcoma 3611 viral oncogene homolog 1

Pathway

- [Acute myeloid leukemia](#)

- [Bladder cancer](#)
- [Chronic myeloid leukemia](#)
- [Colorectal cancer](#)
- [Endometrial cancer](#)
- [ErbB signaling pathway](#)
- [Glioma](#)
- [Insulin signaling pathway](#)
- [Long-term depression](#)
- [Long-term potentiation](#)
- [Melanoma](#)
- [Natural killer cell mediated cytotoxicity](#)
- [Non-small cell lung cancer](#)
- [Pancreatic cancer](#)
- [Pathways in cancer](#)
- [Prostate cancer](#)
- [Regulation of actin cytoskeleton](#)
- [Renal cell carcinoma](#)
- [Vascular smooth muscle contraction](#)